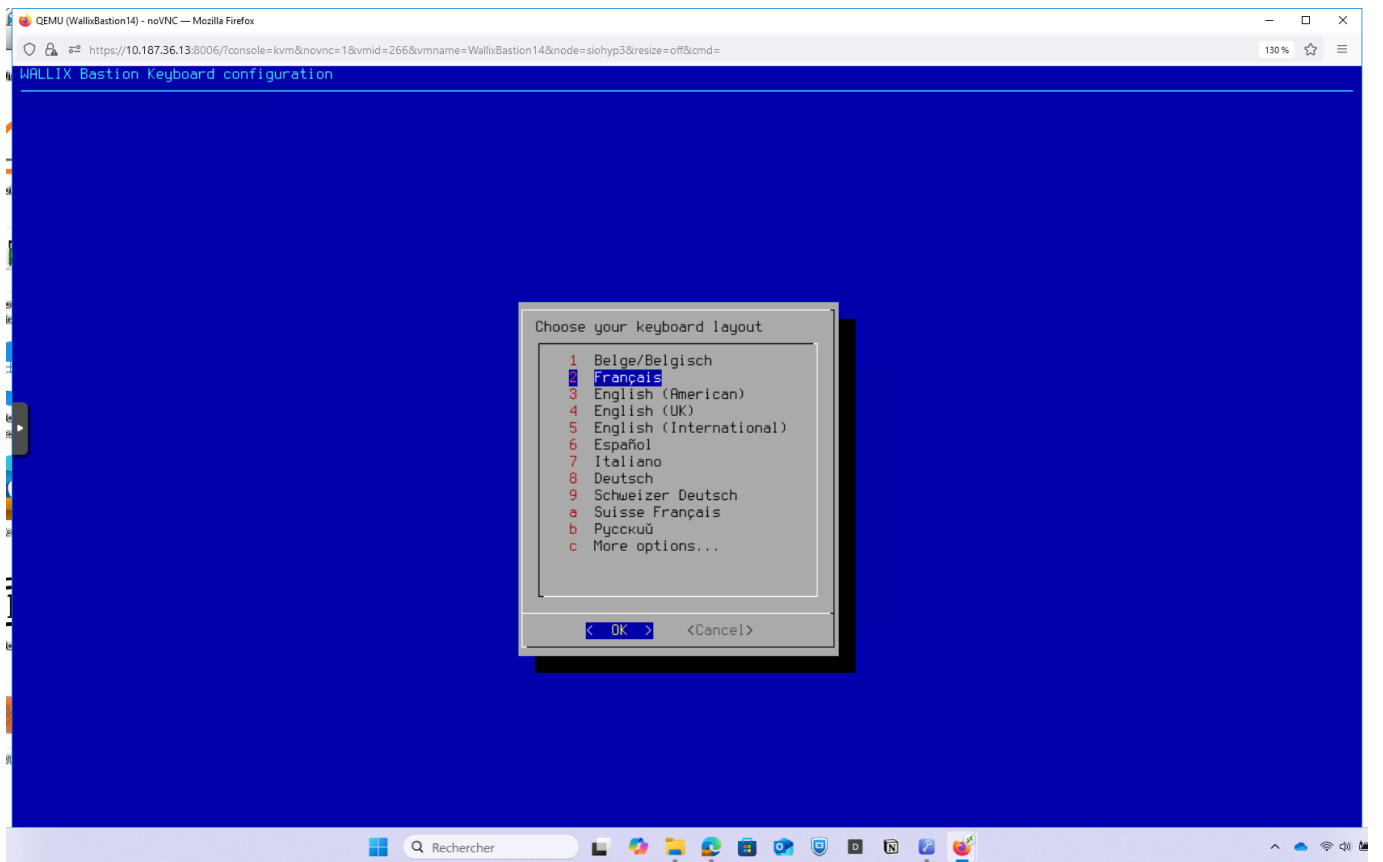
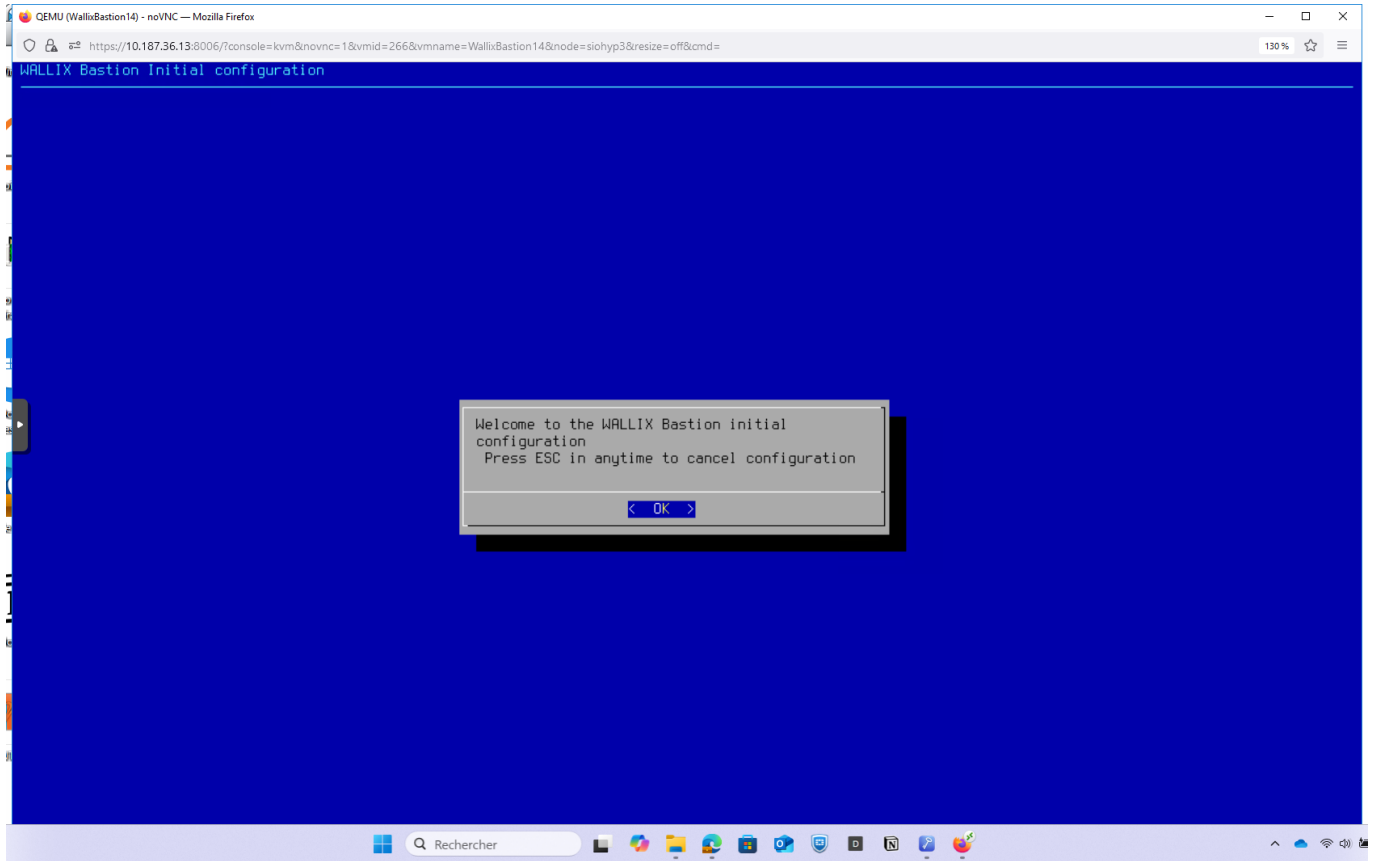


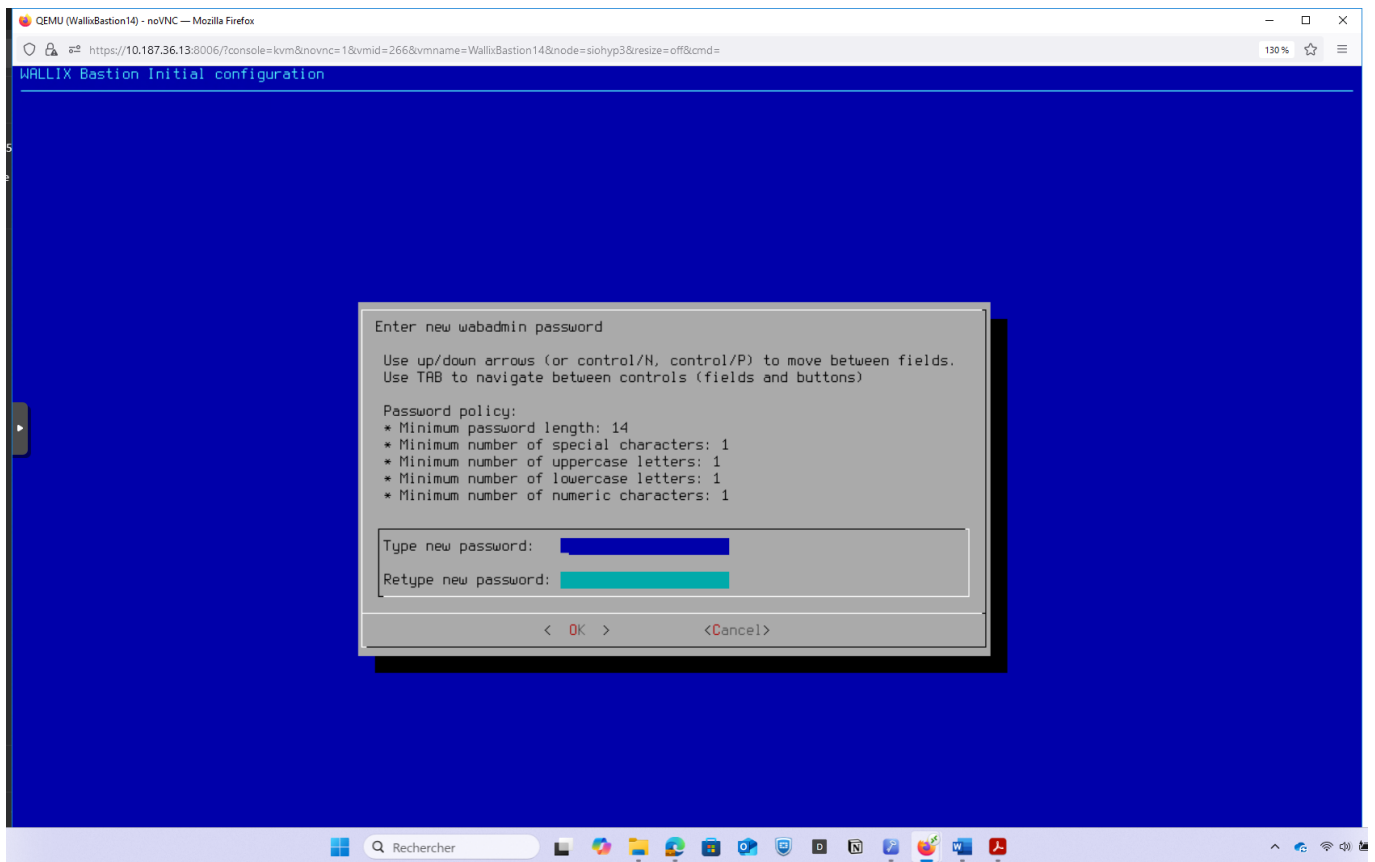
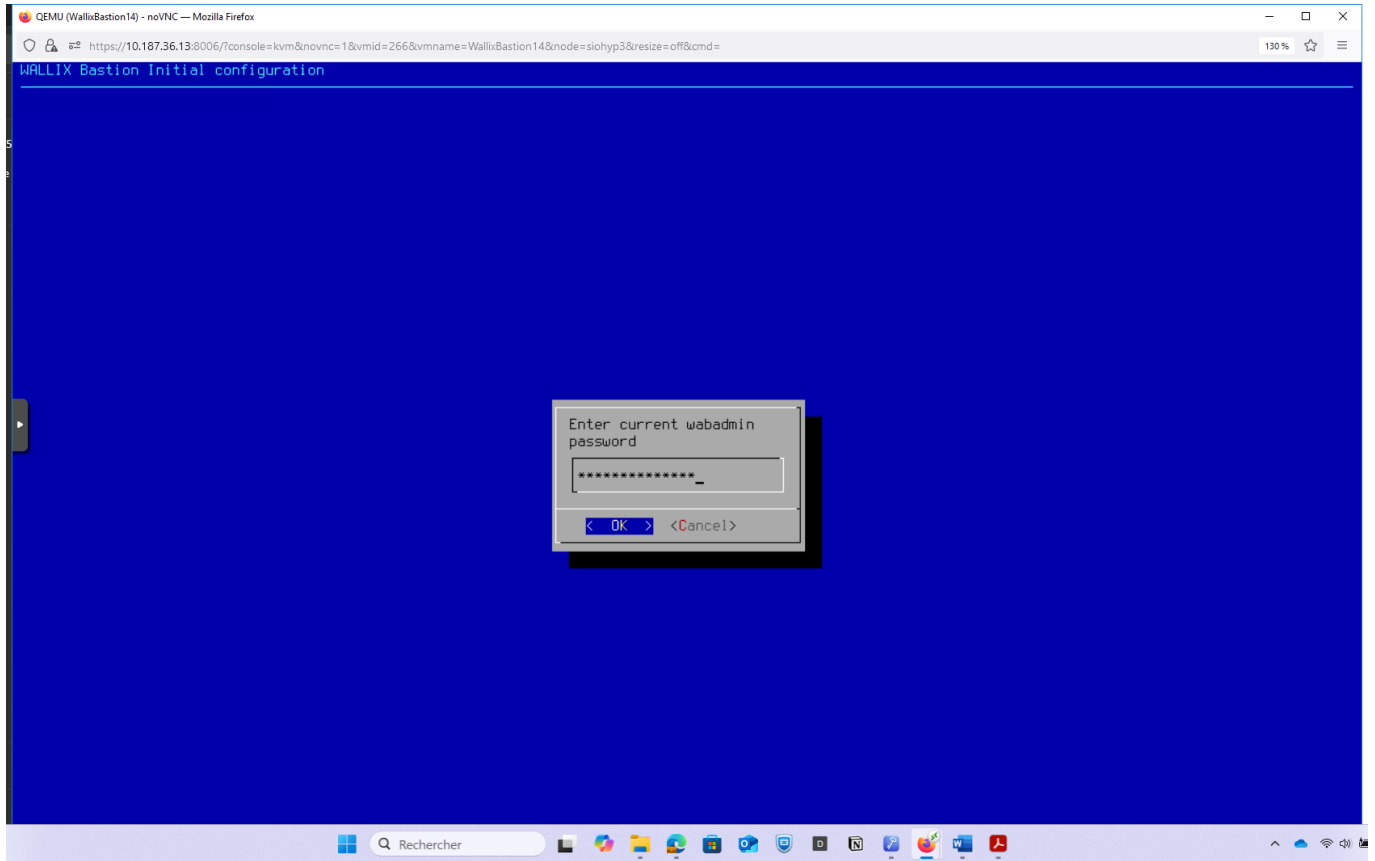
Installation du bastion Wallix

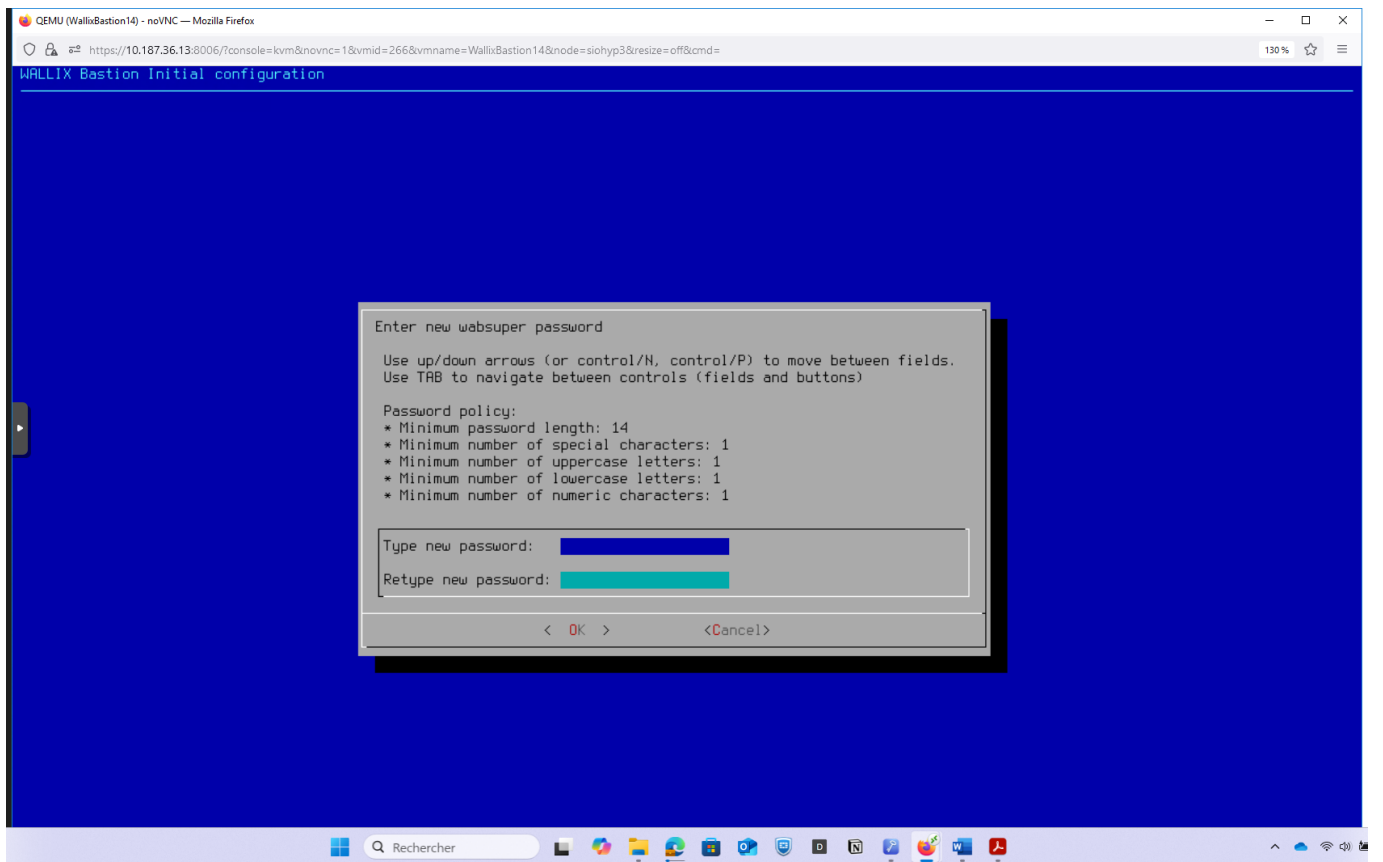
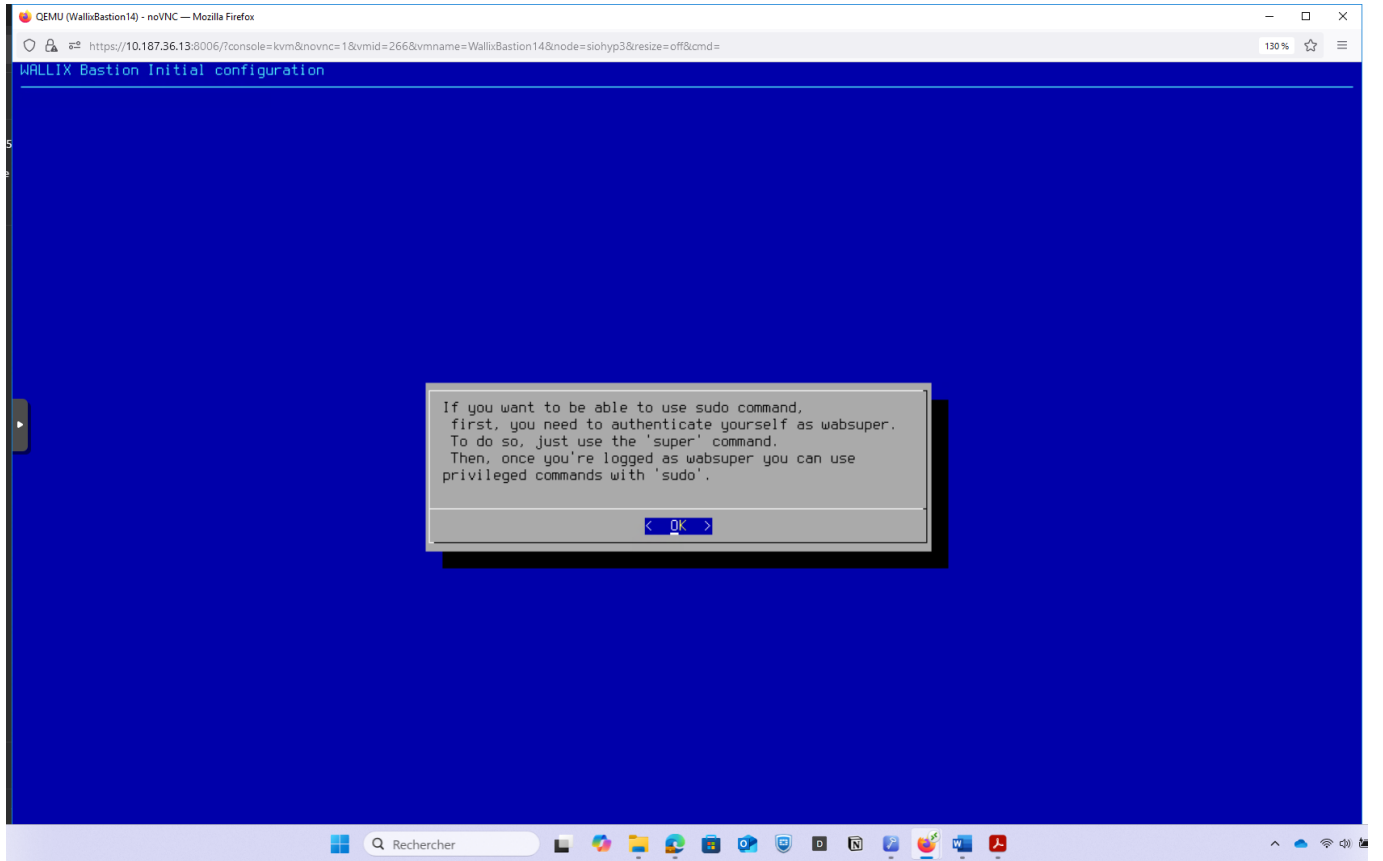
- Dans Proxmox, créer le bastion à partir du modèle de template
 - Démarrer le Bastion

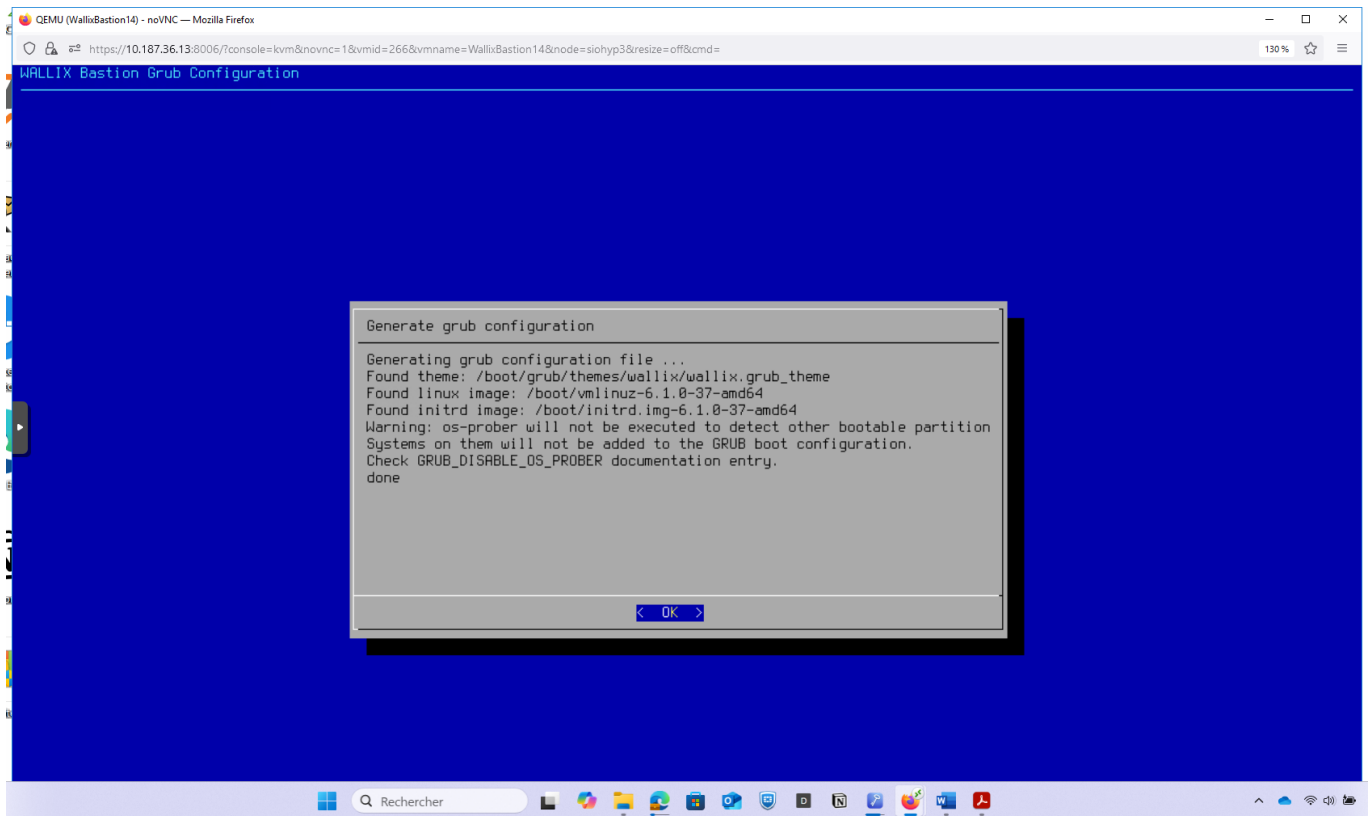
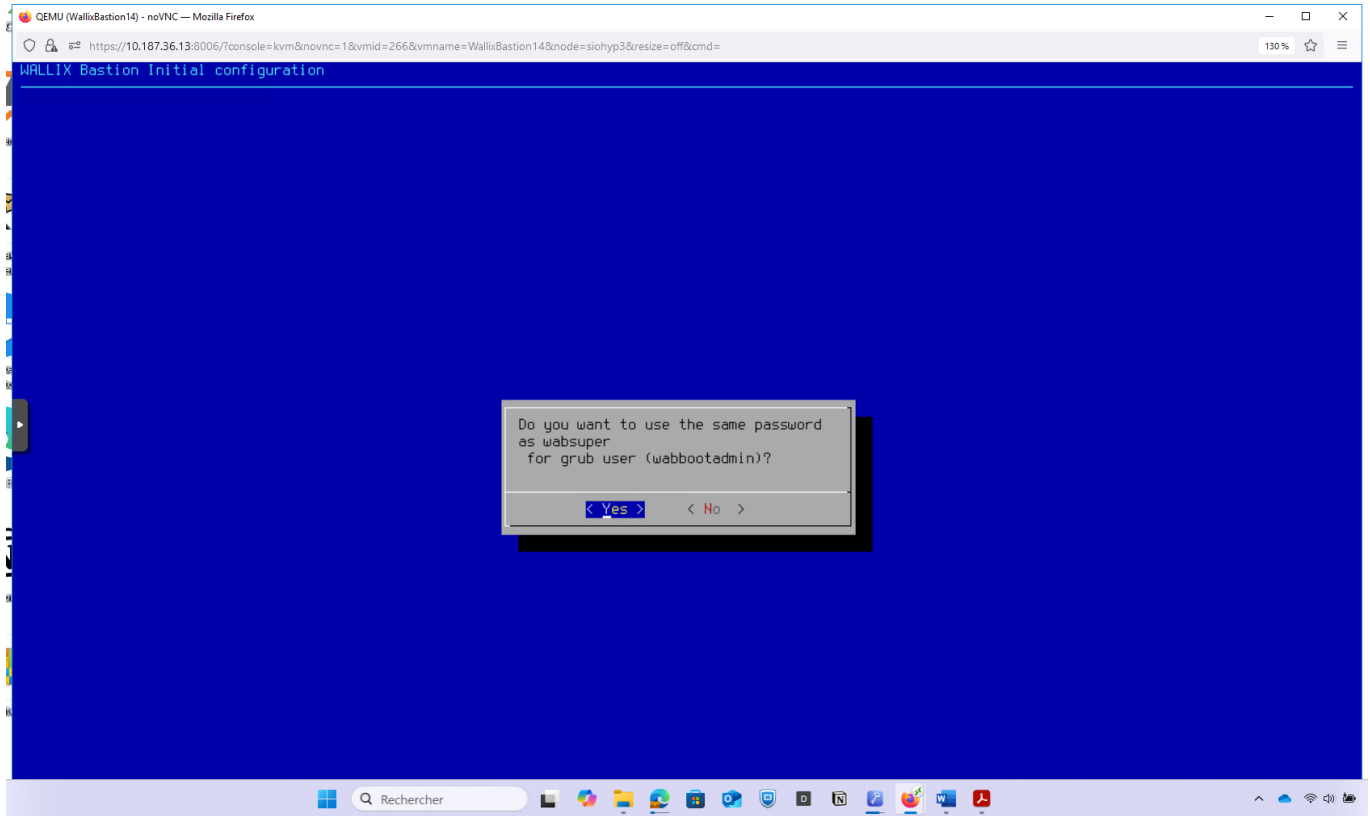


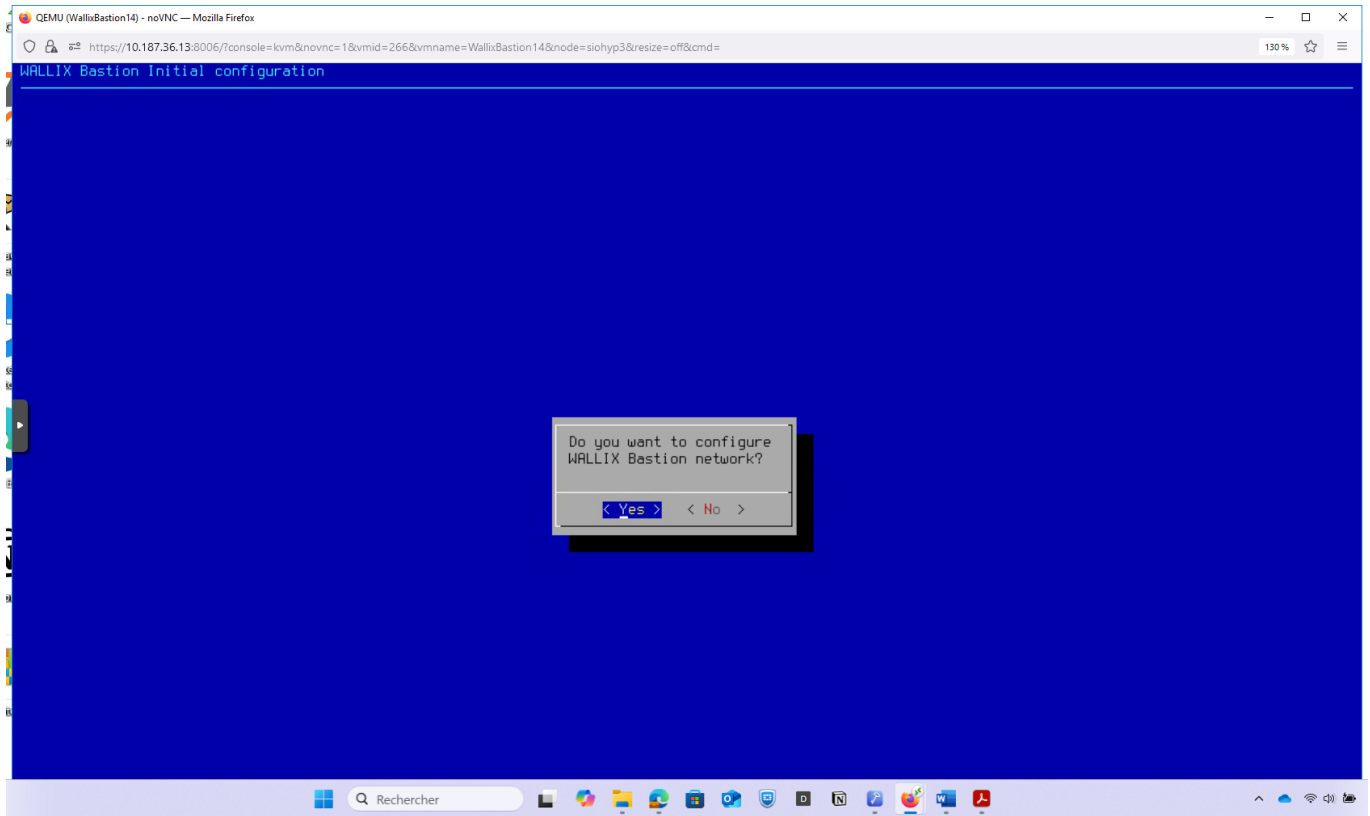
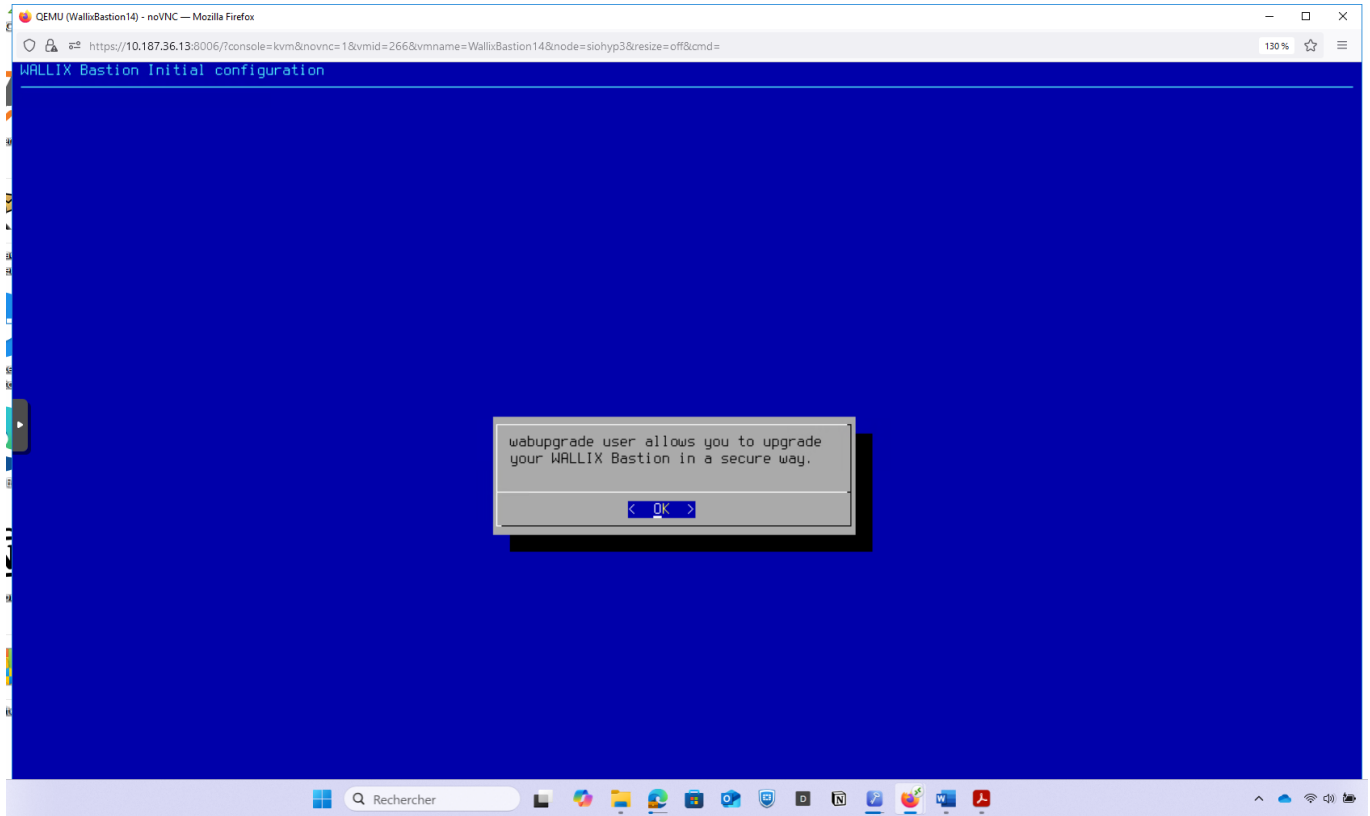


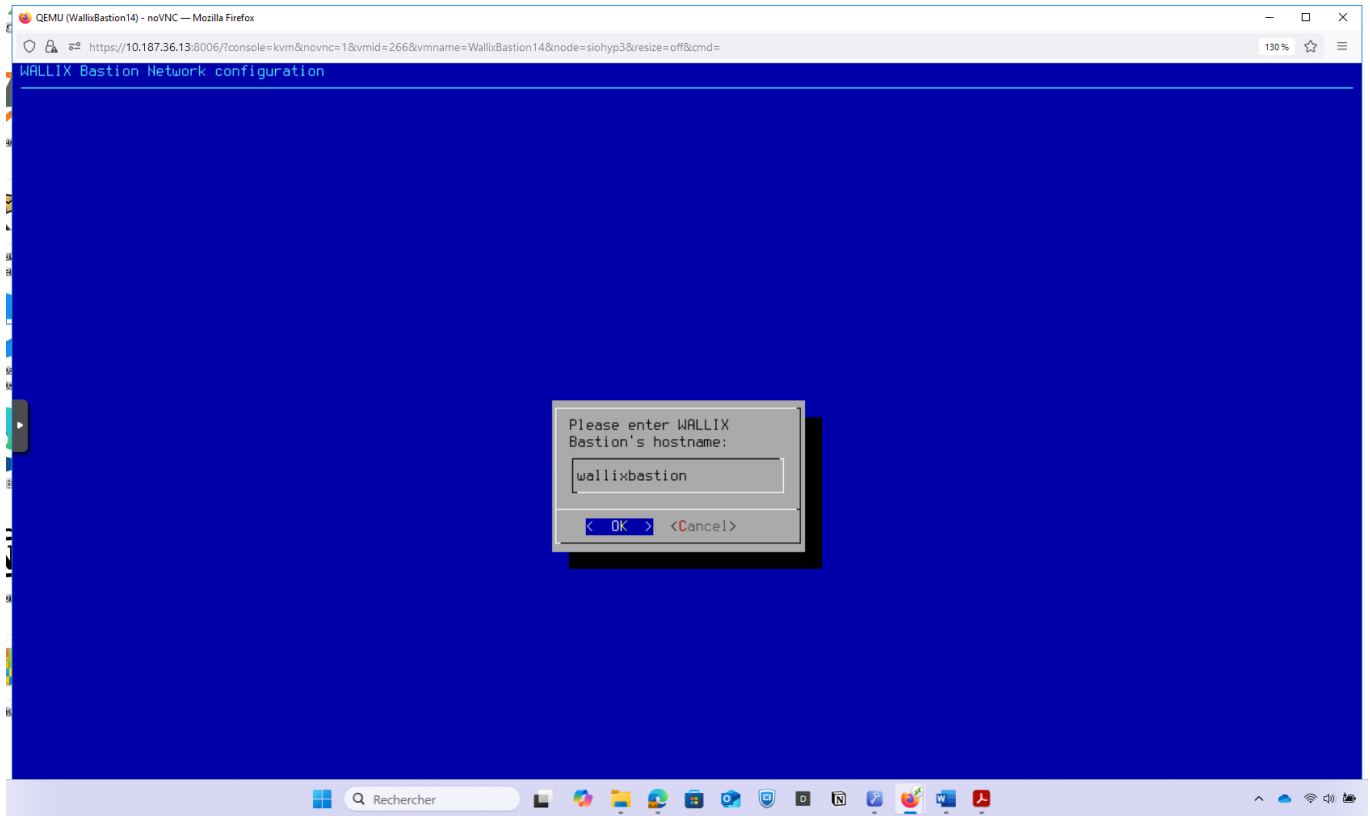
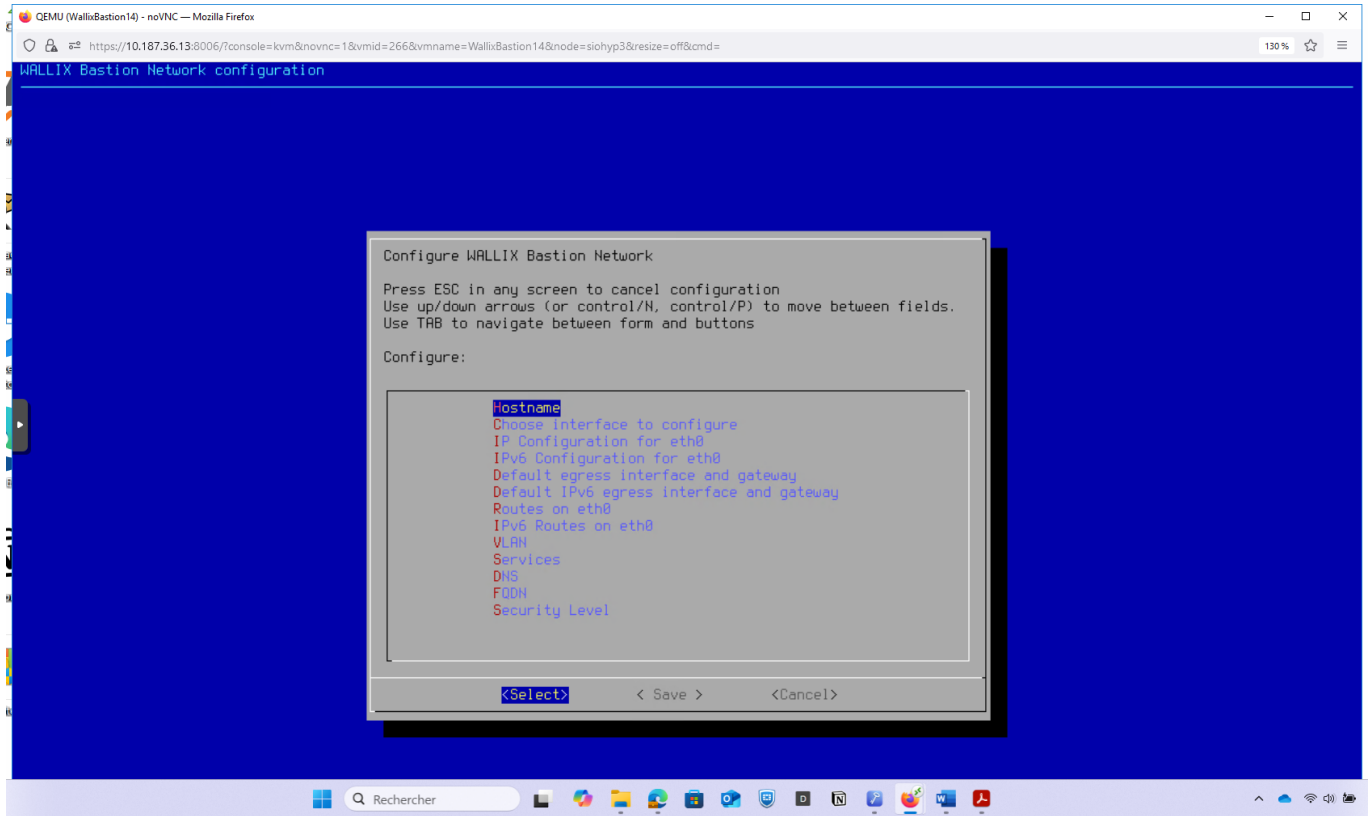
Le mot de passe initial du compte **wabadmin** est **SecureWabAdmin**. Il est nécessaire de le changer par un mot de passe fort.

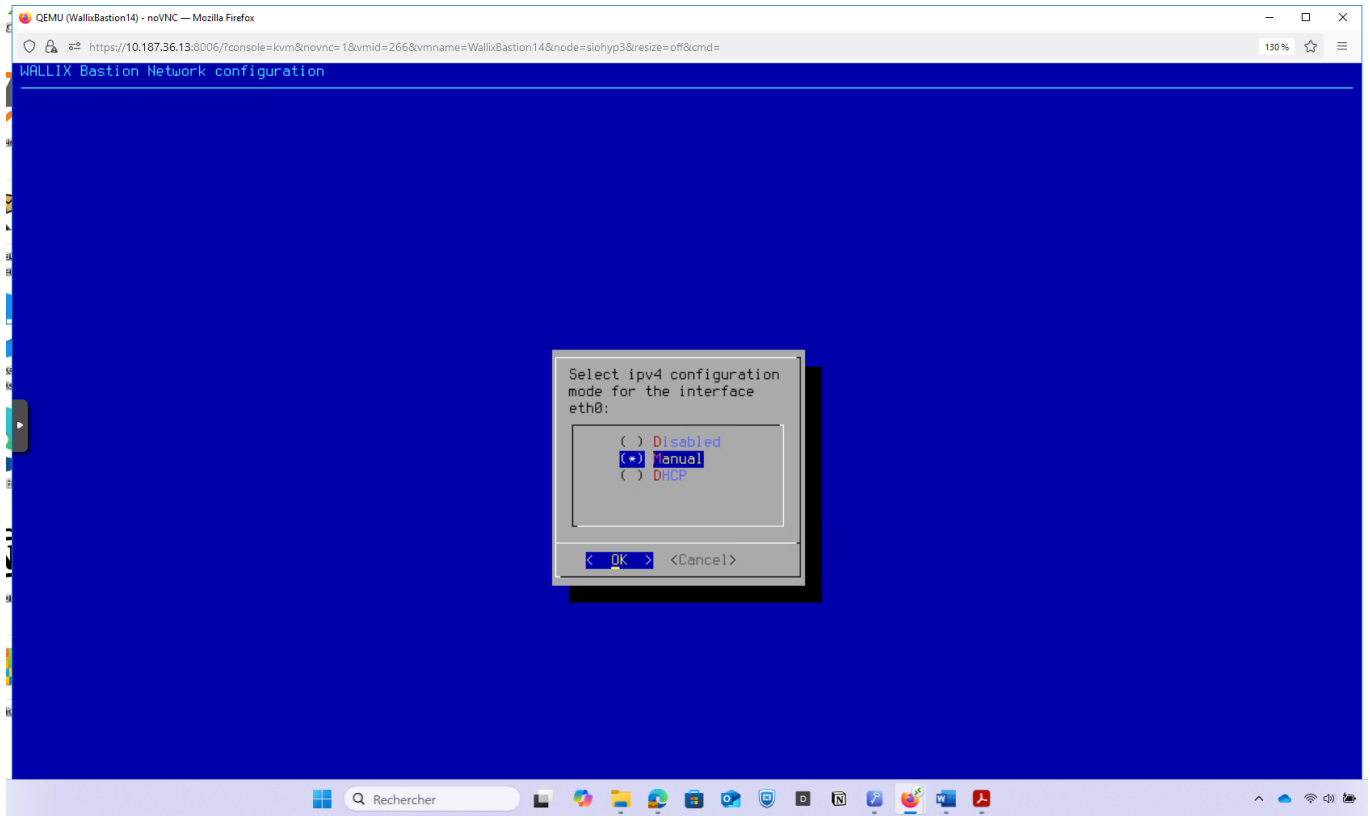
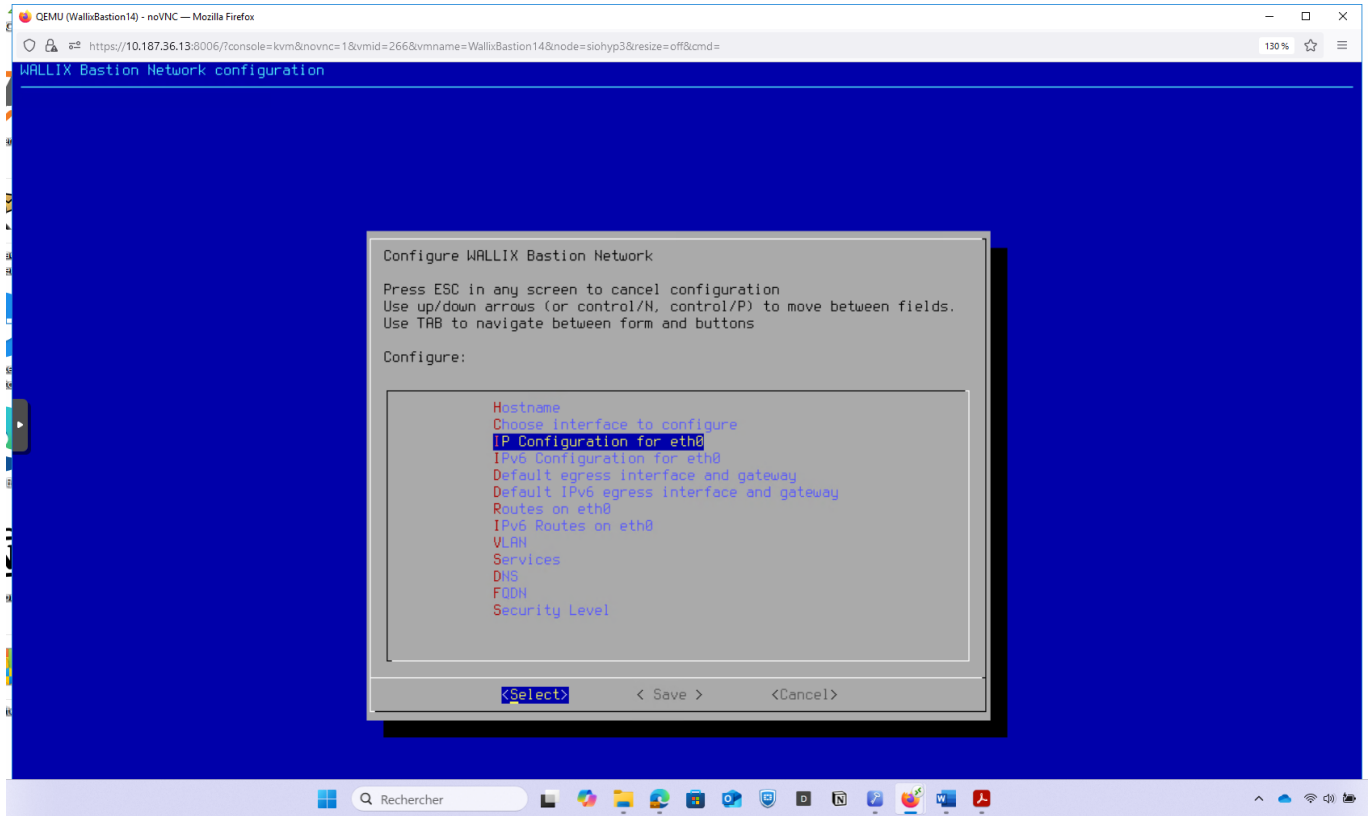


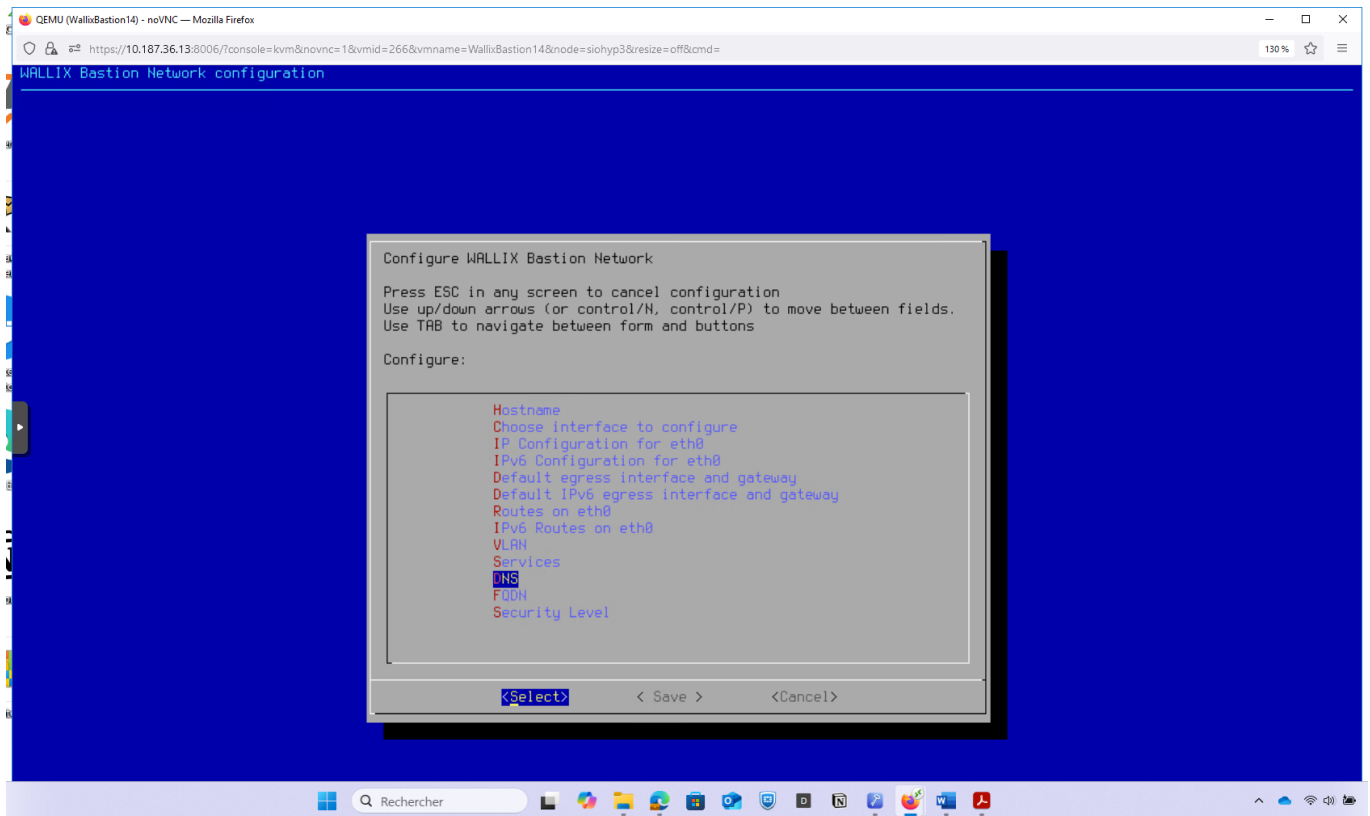
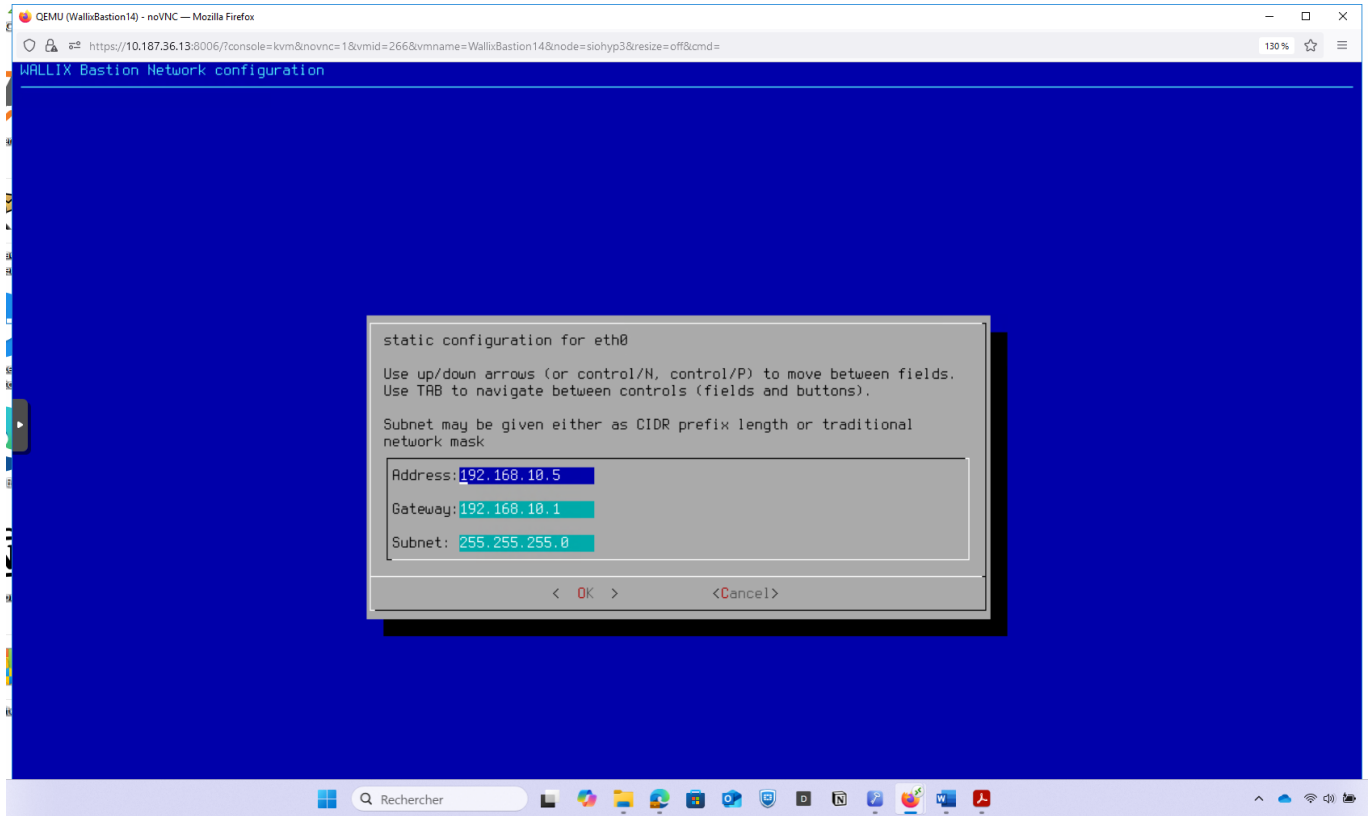


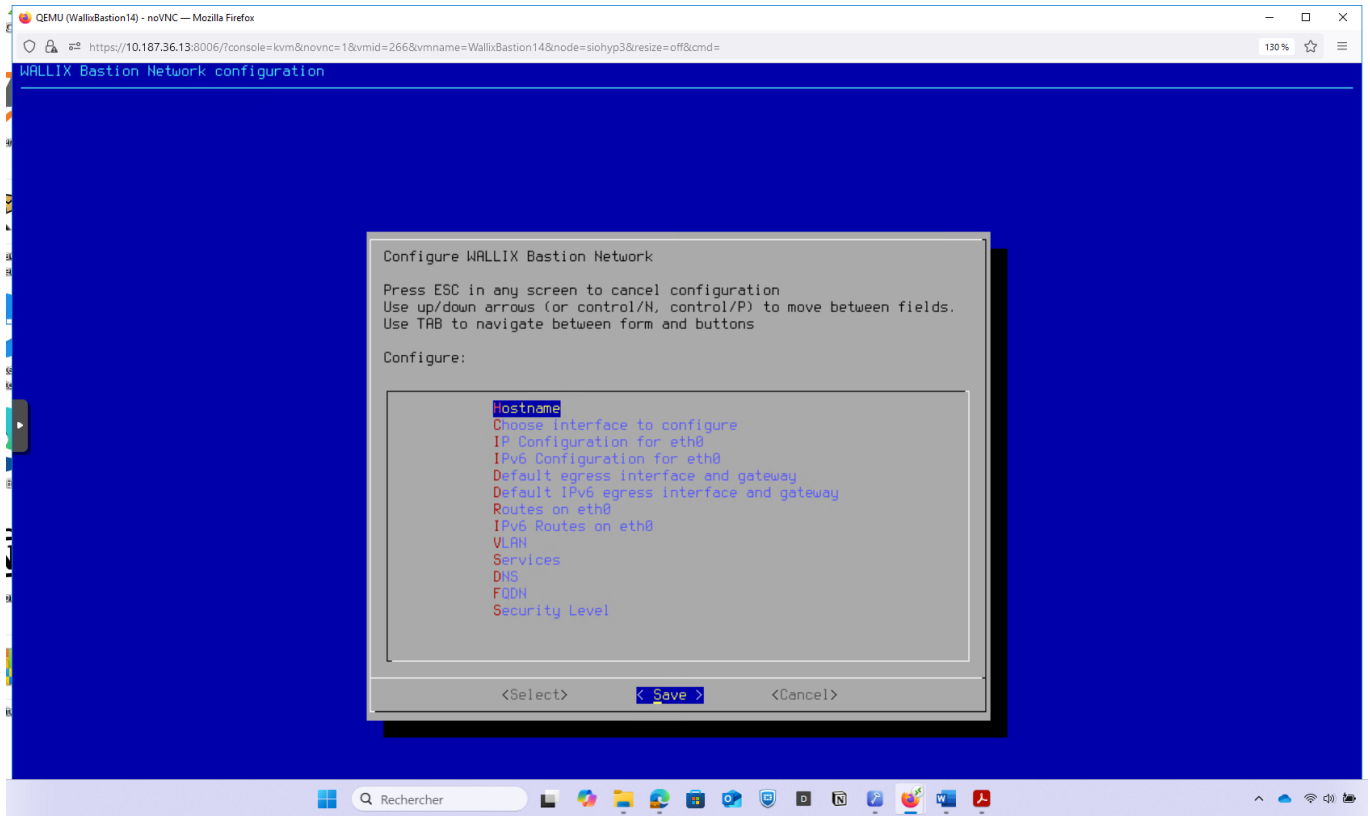
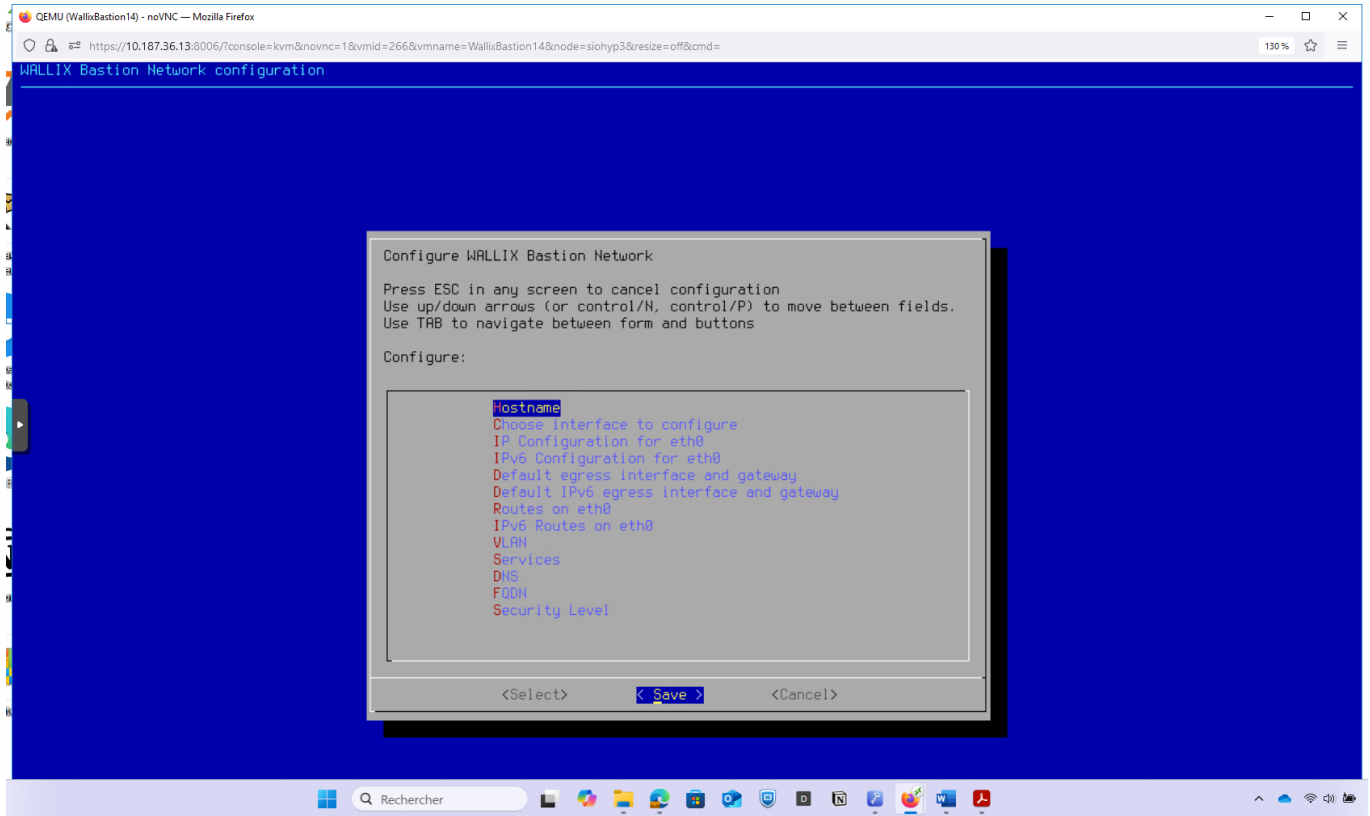


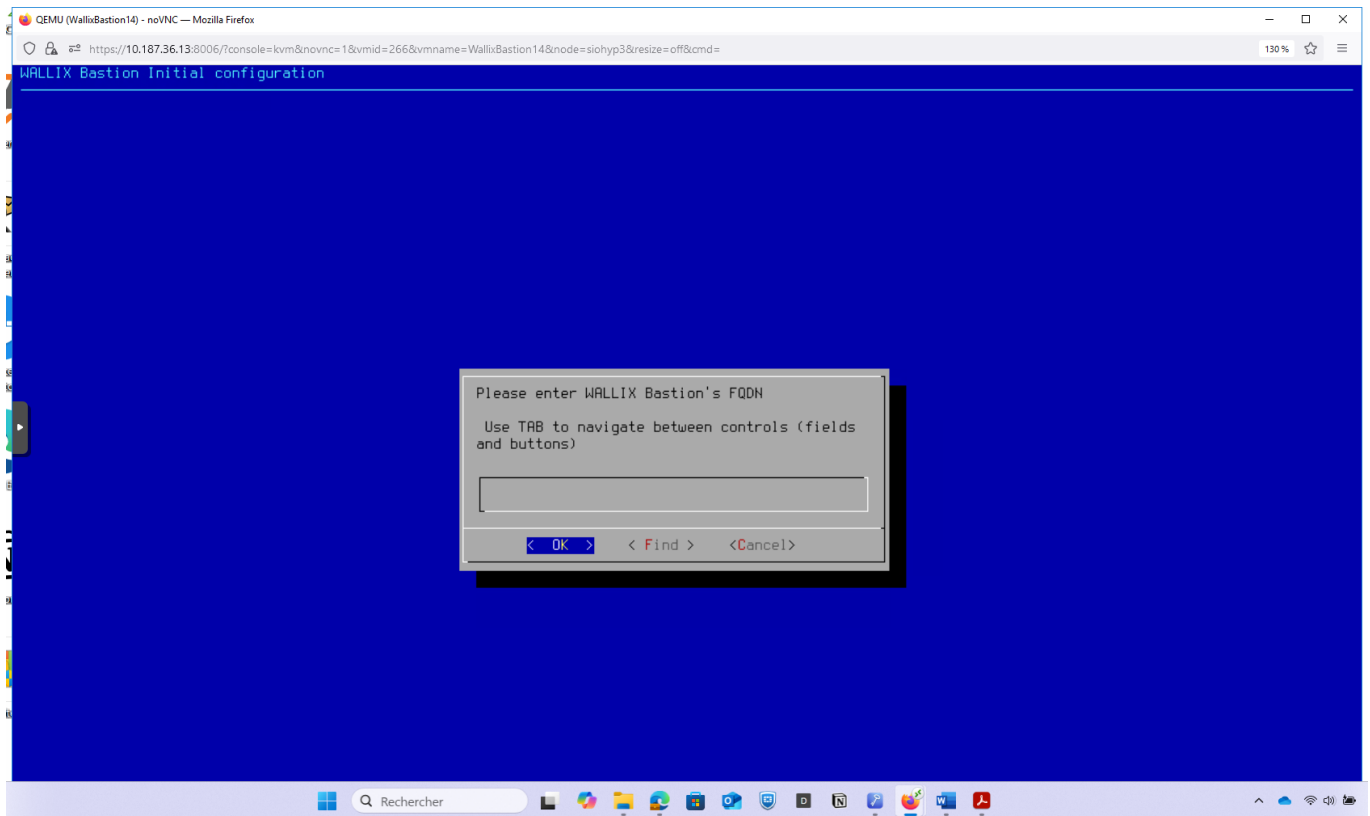
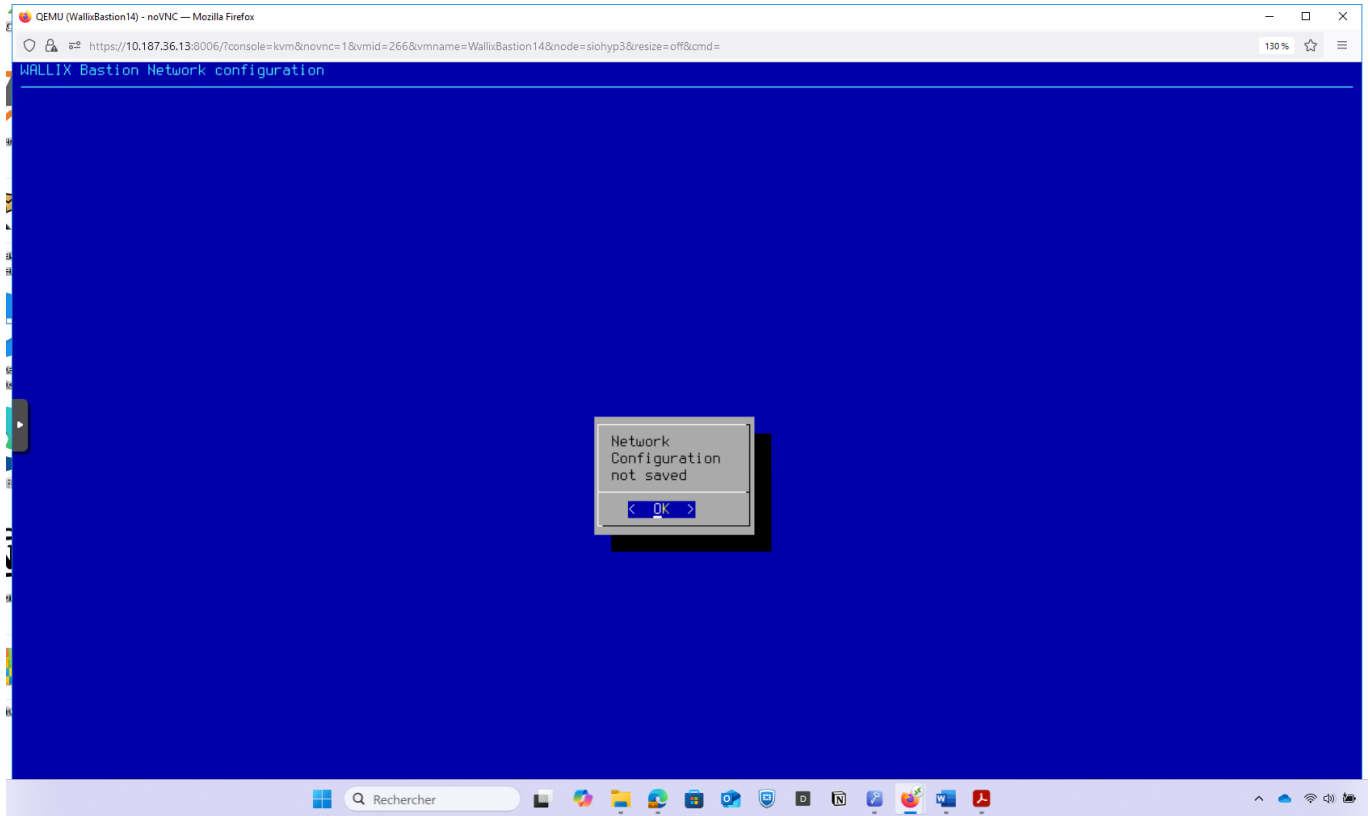


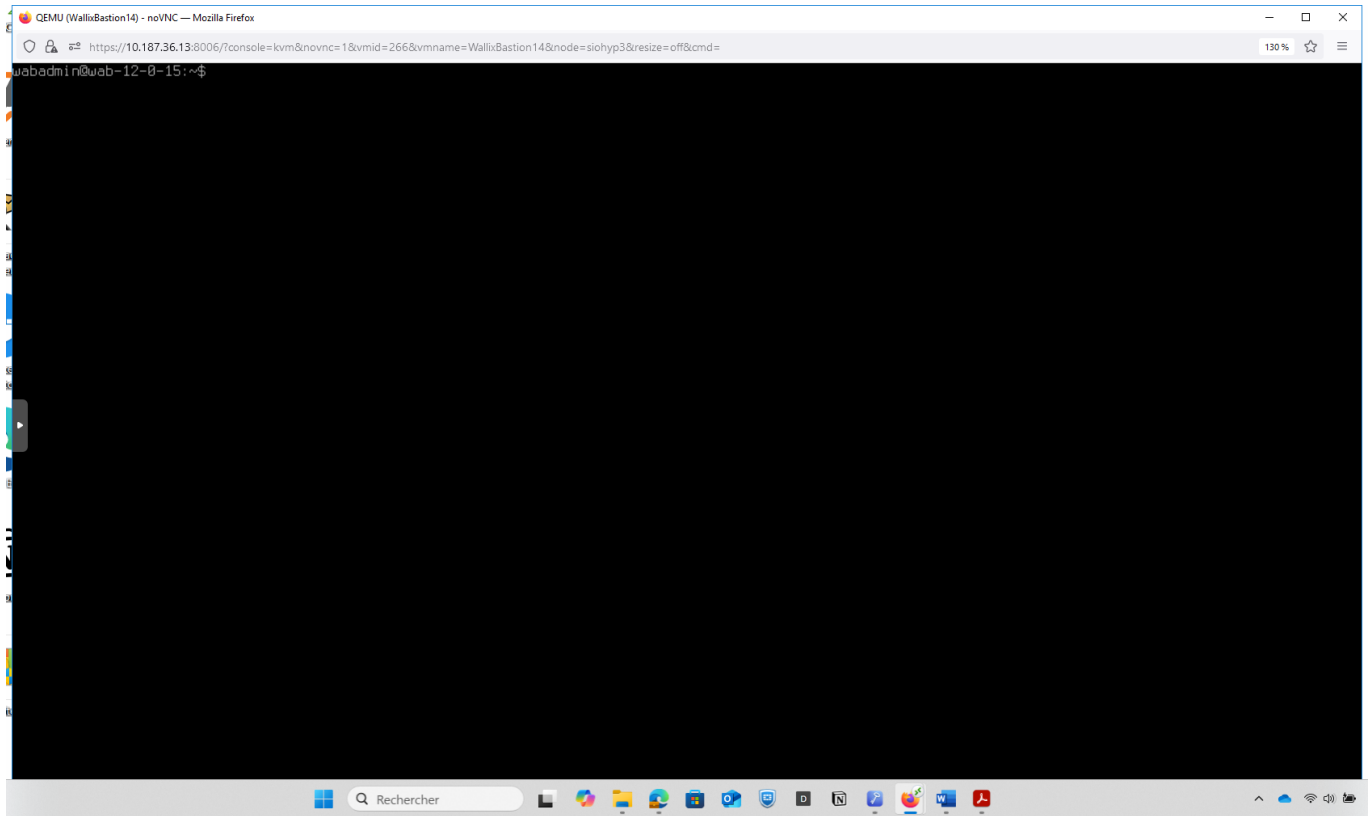
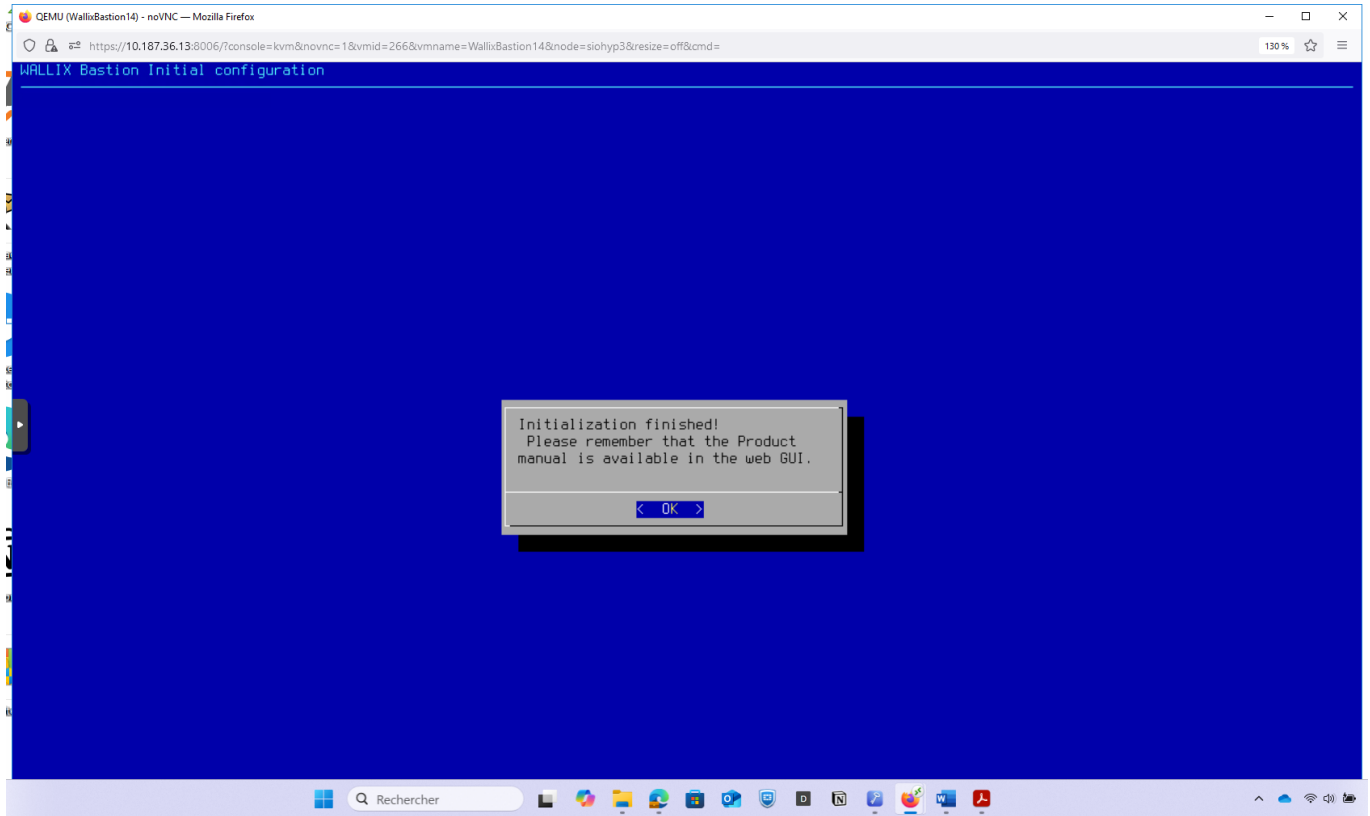












Configurer les certificats

Dans le dossier /var/wab/apache2/ssl.crt le fichier server.pem est vide.

Il est nécessaire de recréer une CA pour signer le certificat du serveur Wallix et générer le fichier server.pem.

Création de la clé privée de l'autorité de certification (CA)

```
$ openssl genrsa -aes256 -out ca-key.pem 2048
```

Indiquez une pass-phrase pour votre nouvelle clé, pass-phrase qui sera demandé lors de la création du certificat.

Création de la requête de demande de signature du certificat de la CA

```
$ openssl req -new -key ca-key.pem -out ca.csr
```

Génération du certificat auto-signé du CA

```
$ openssl x509 -req -days 365000 -in ca.csr -signkey ca-key.pem -out ca.crt
```

Génération du certificat avec signature par le CA

Le fichier server.csr de demande de signature existe déjà. Il ne reste plus qu'à signer le certificat du serveur server.crt

```
$ openssl x509 -req -days 365 -CA ca.crt -CAkey ca-key.pem -set_serial 01 -in server.csr -out server.crt
```

Création du fichier server.pem

```
$ cat server.key server.crt > server.pem
```

Accéder au compte root

```
wabadmin@wallixbastion $ super  
wabsuper@wallixbastion$ sudo -i  
root@wallixbastion#
```

From:
/ - Les cours du BTS SIO

Permanent link:
</doku.php/reseau/pam/wallix/install?rev=1759072690>

Last update: 2025/09/28 17:18

