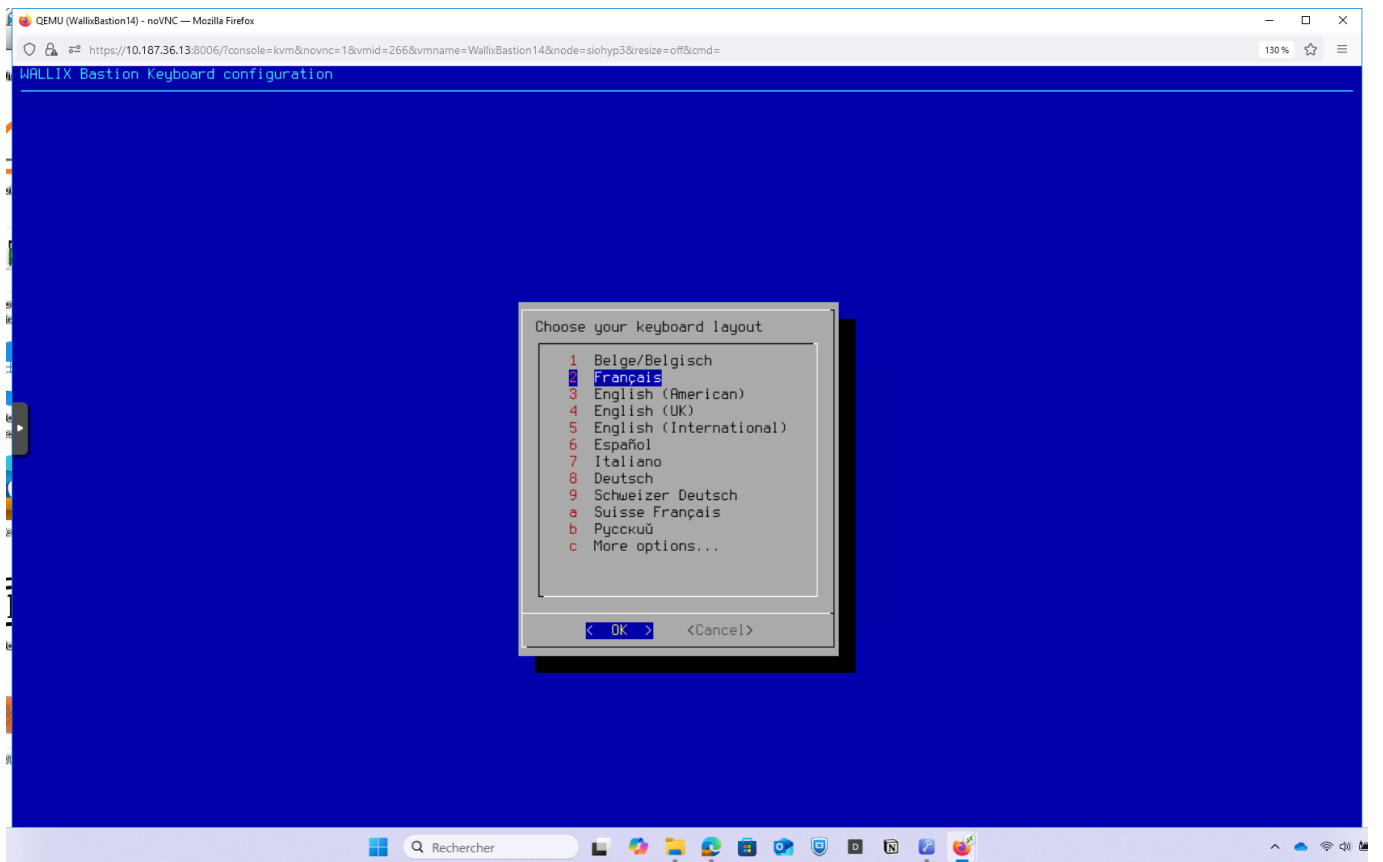
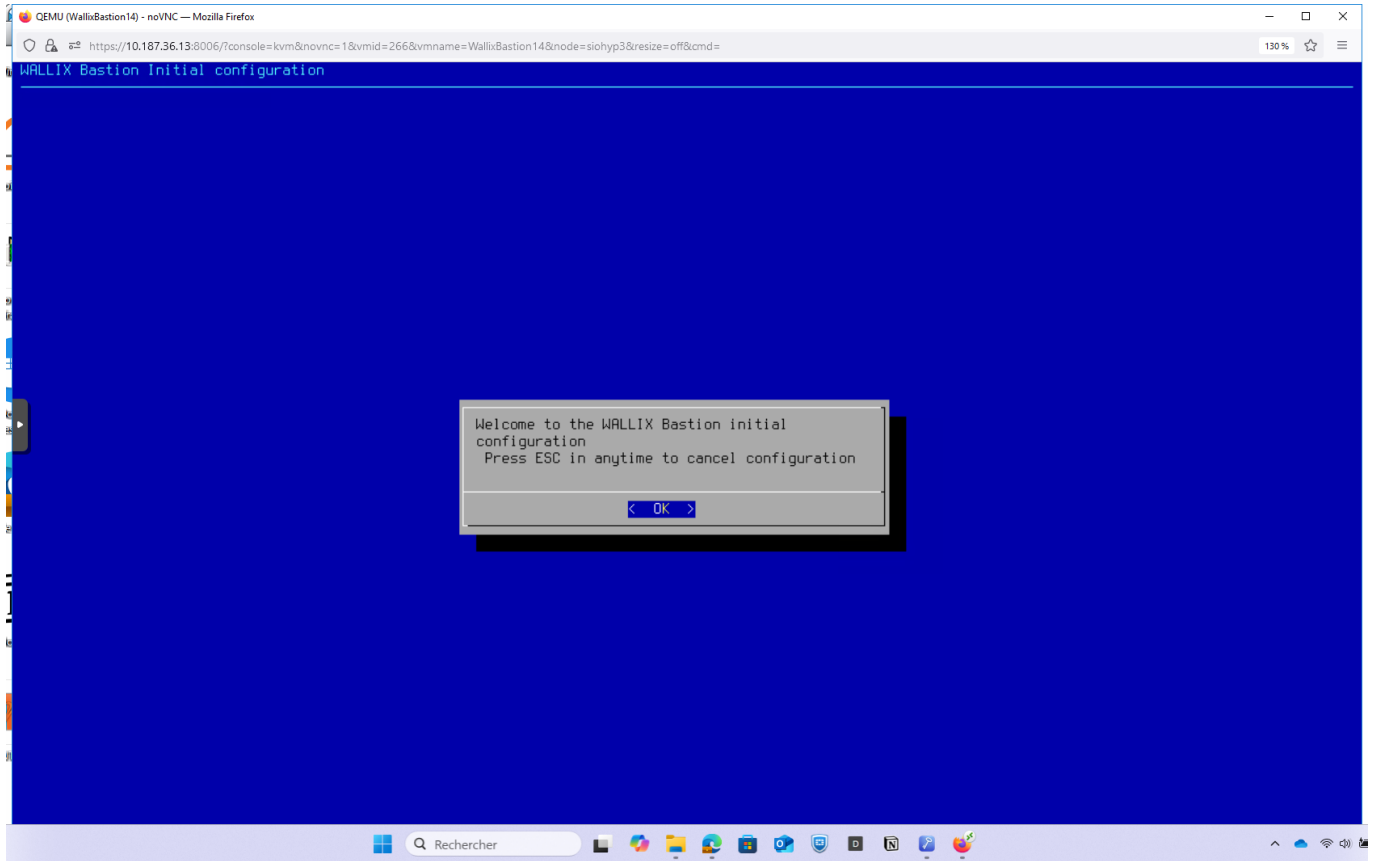


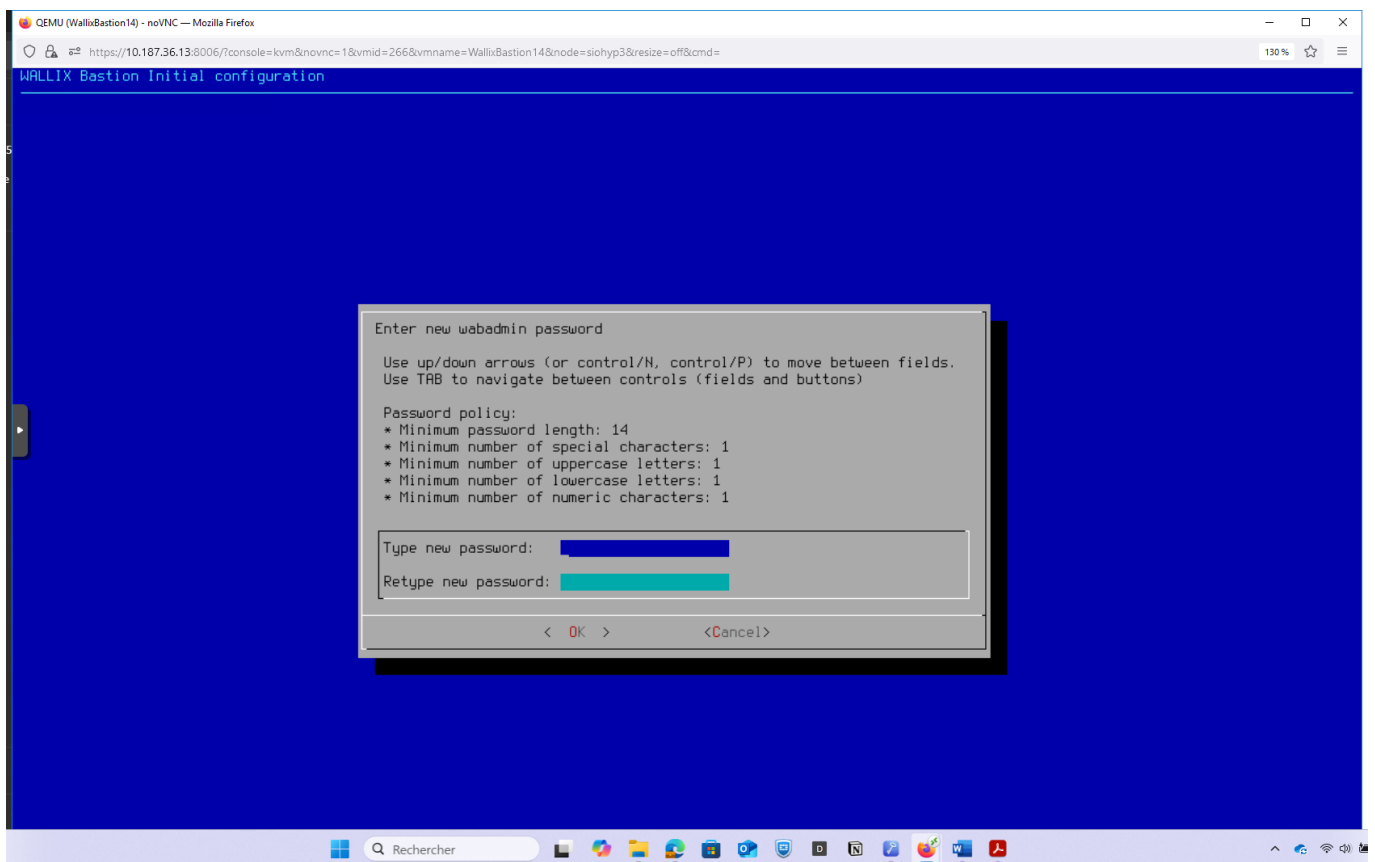
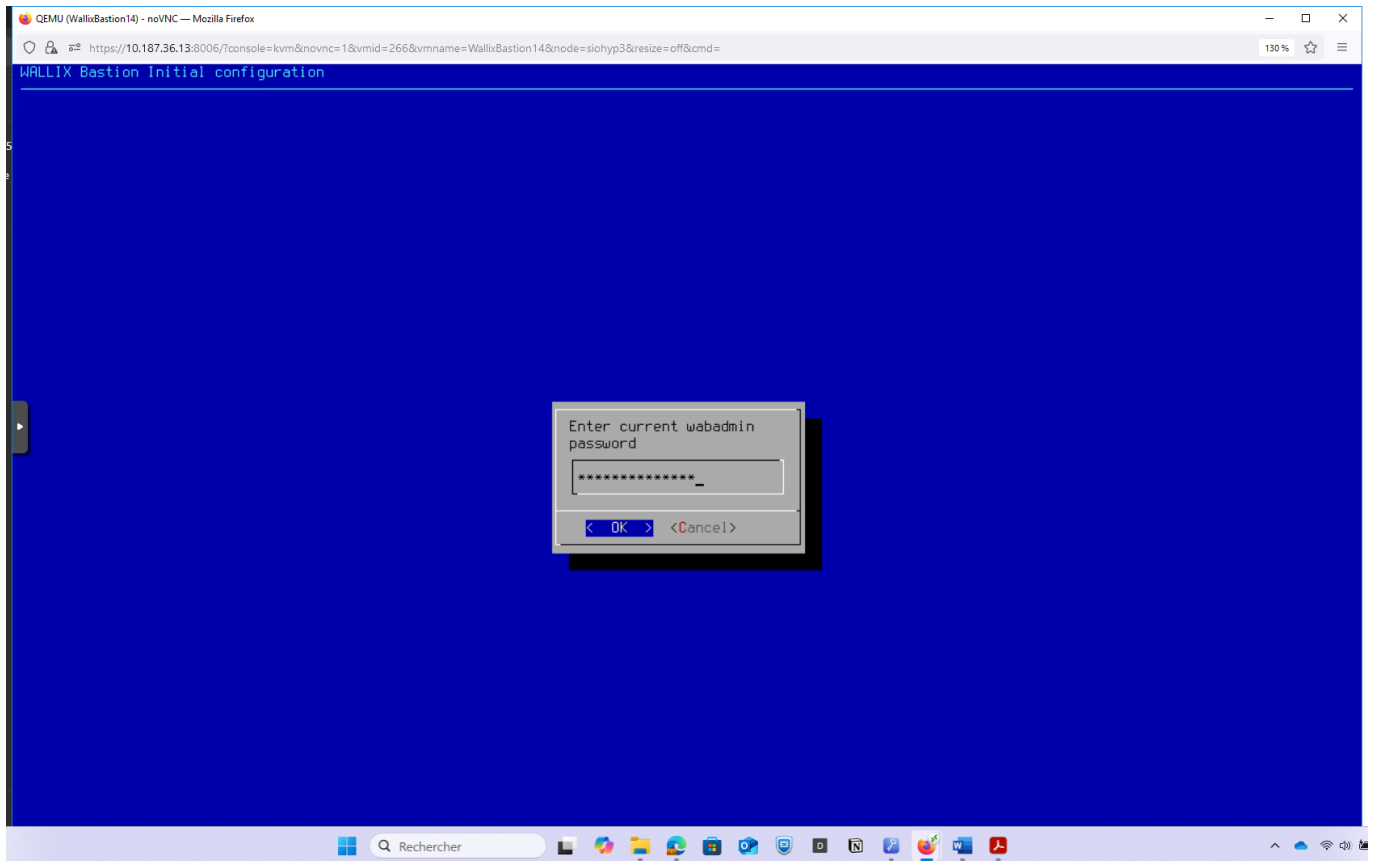
Installation du bastion Wallix

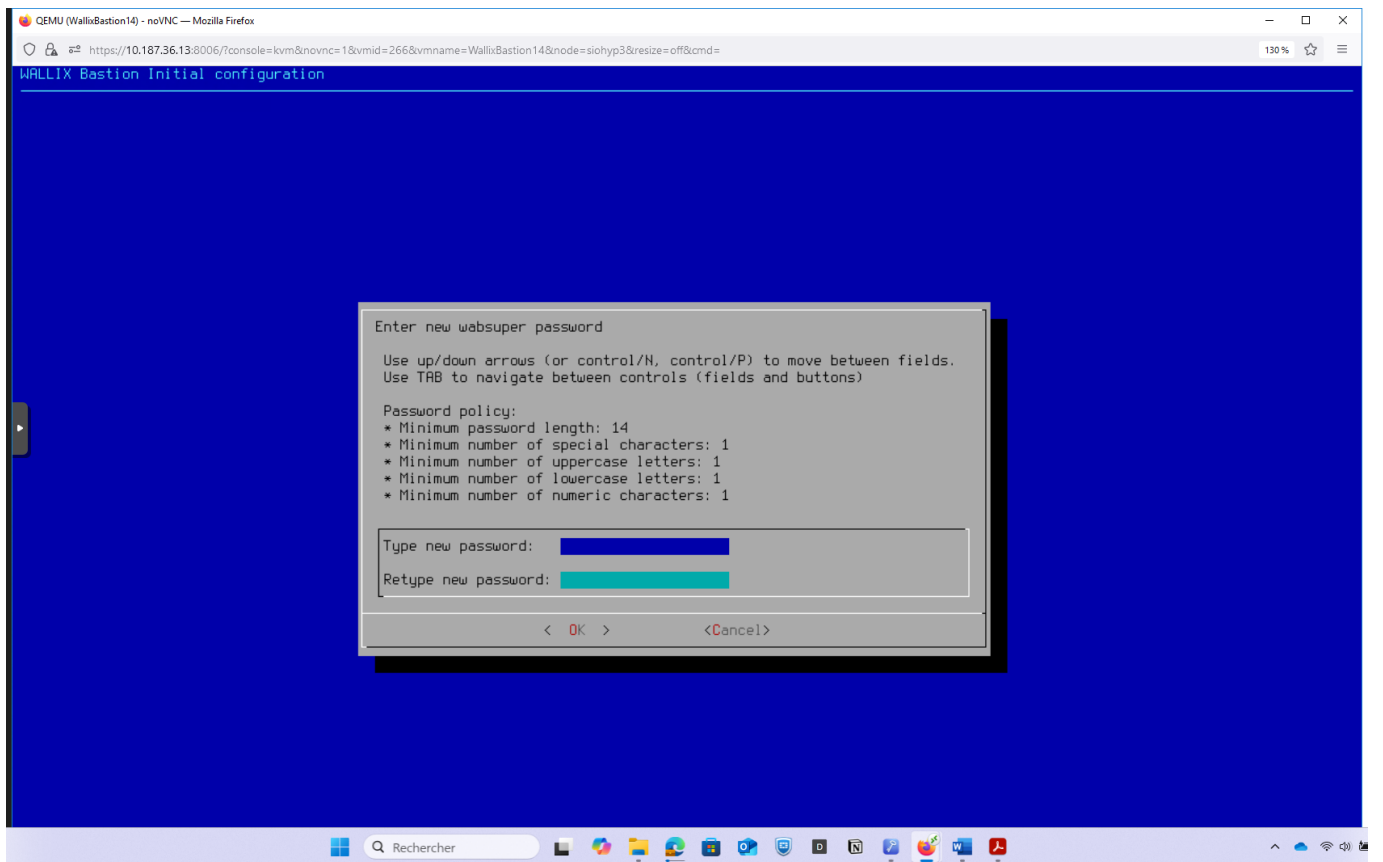
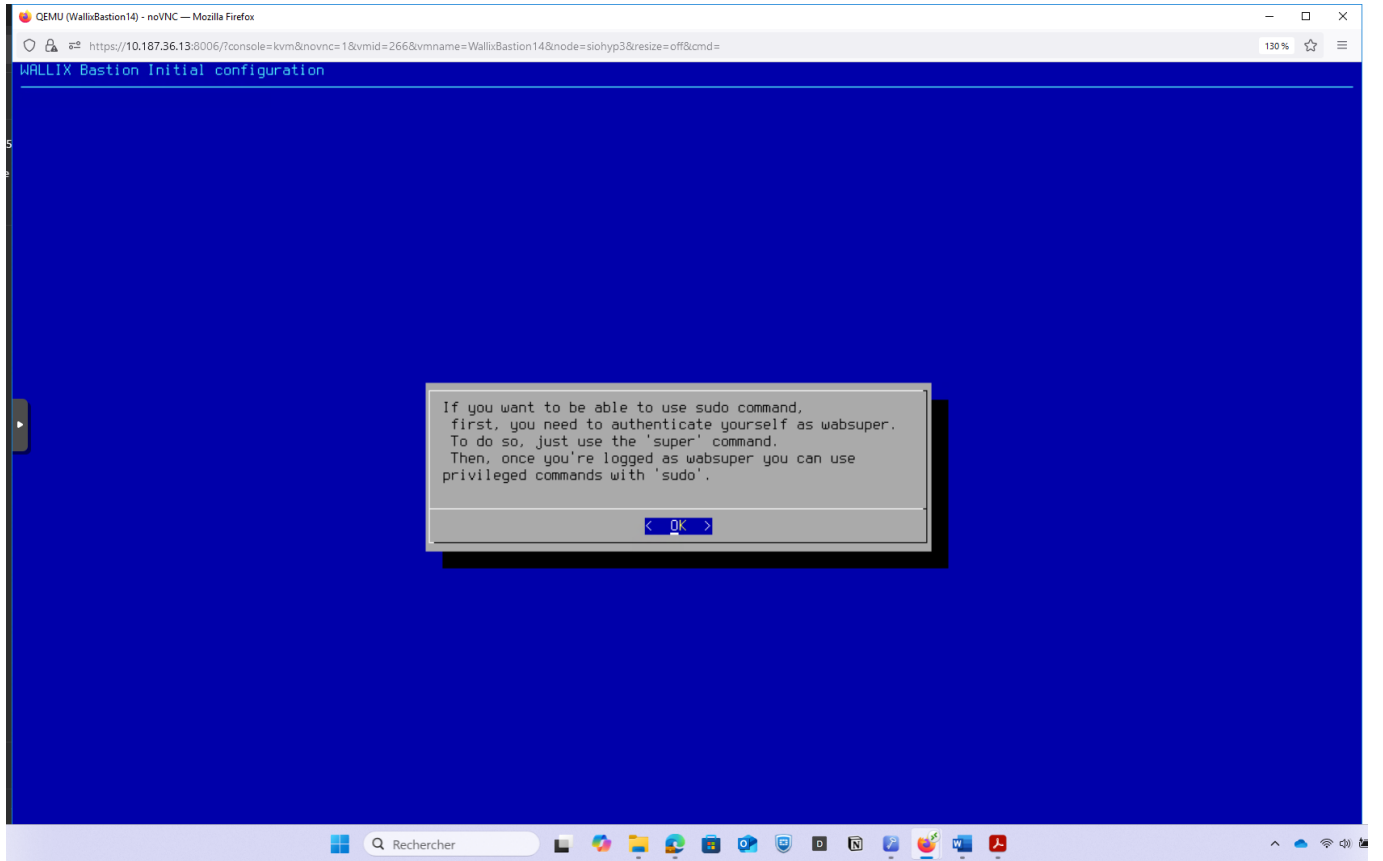
- Dans Proxmox, créer le bastion à partir du modèle de template
 - Démarrer le Bastion

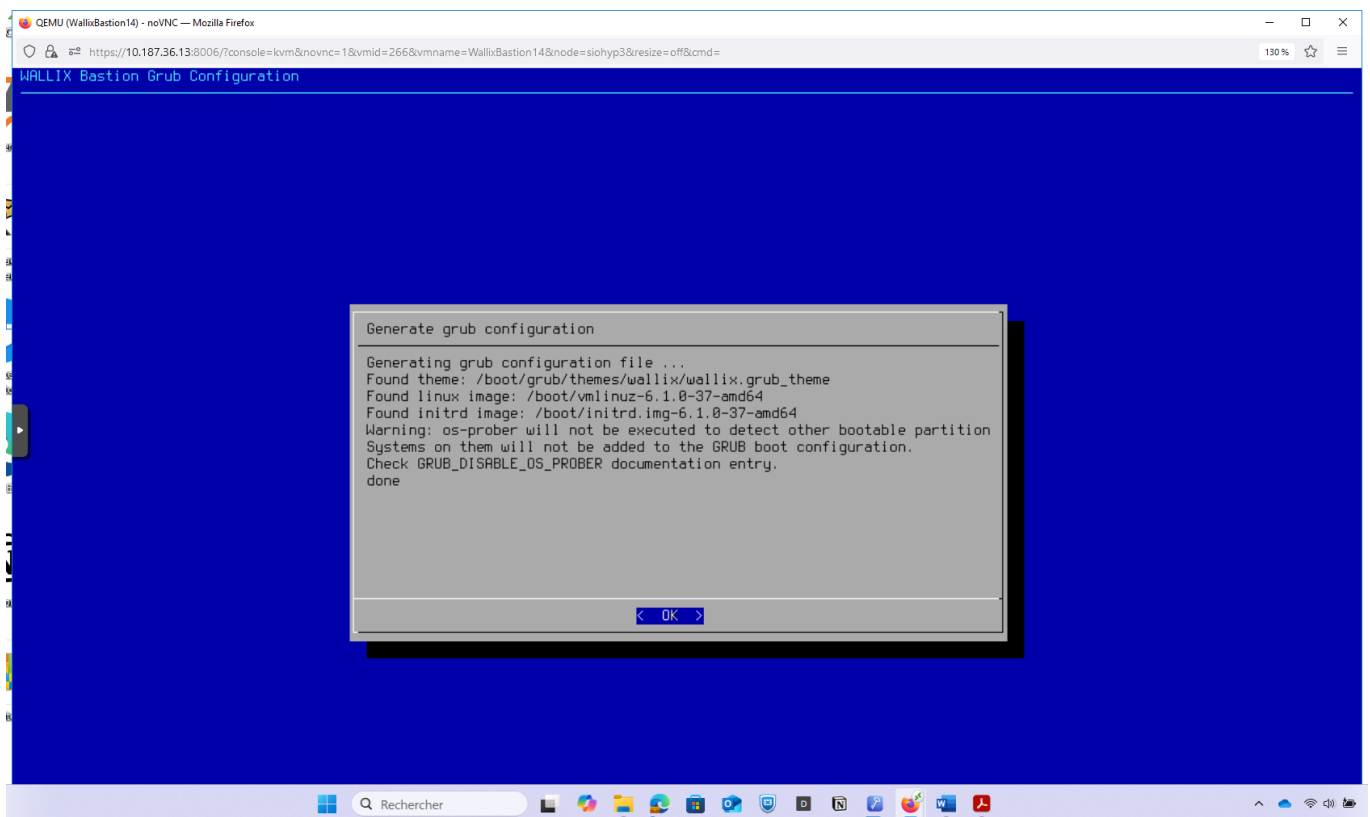
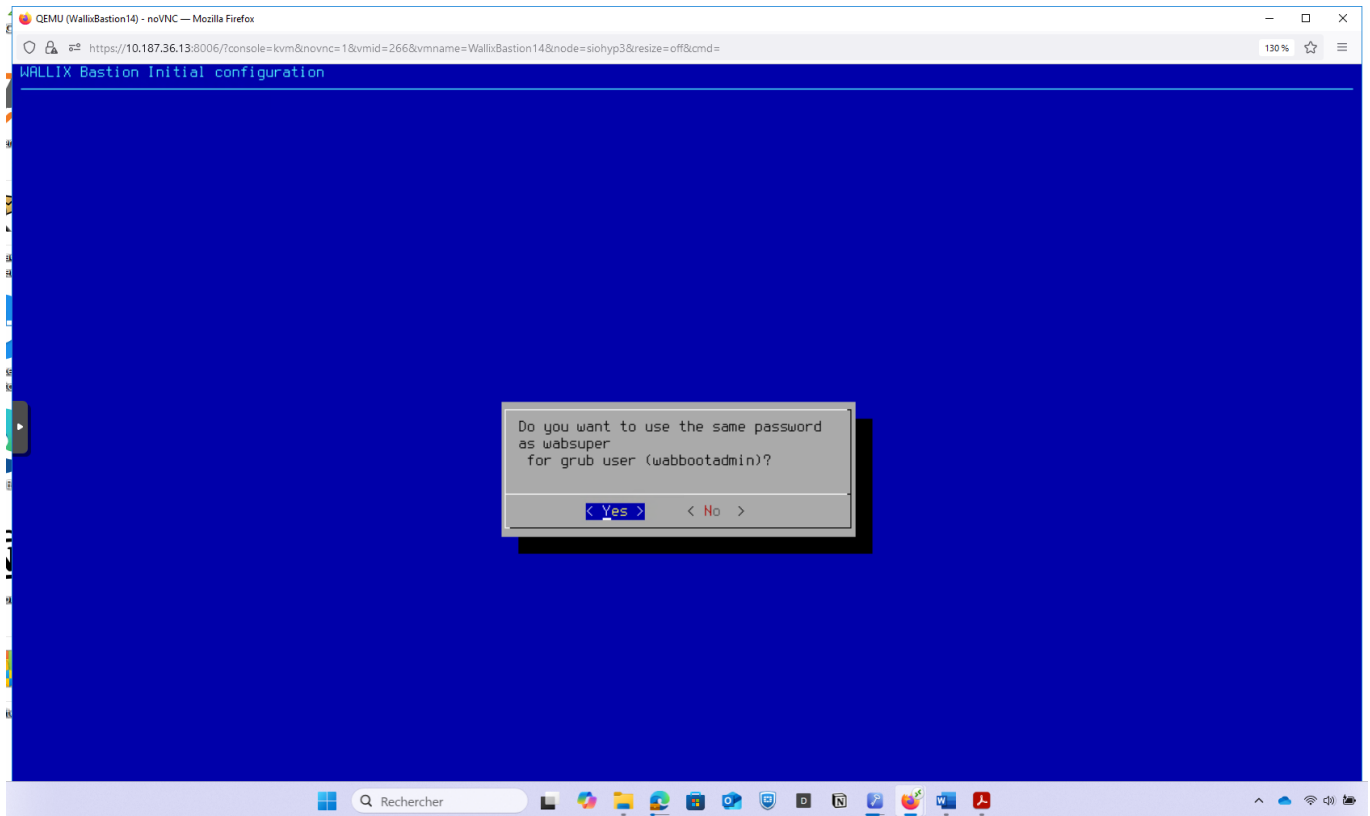


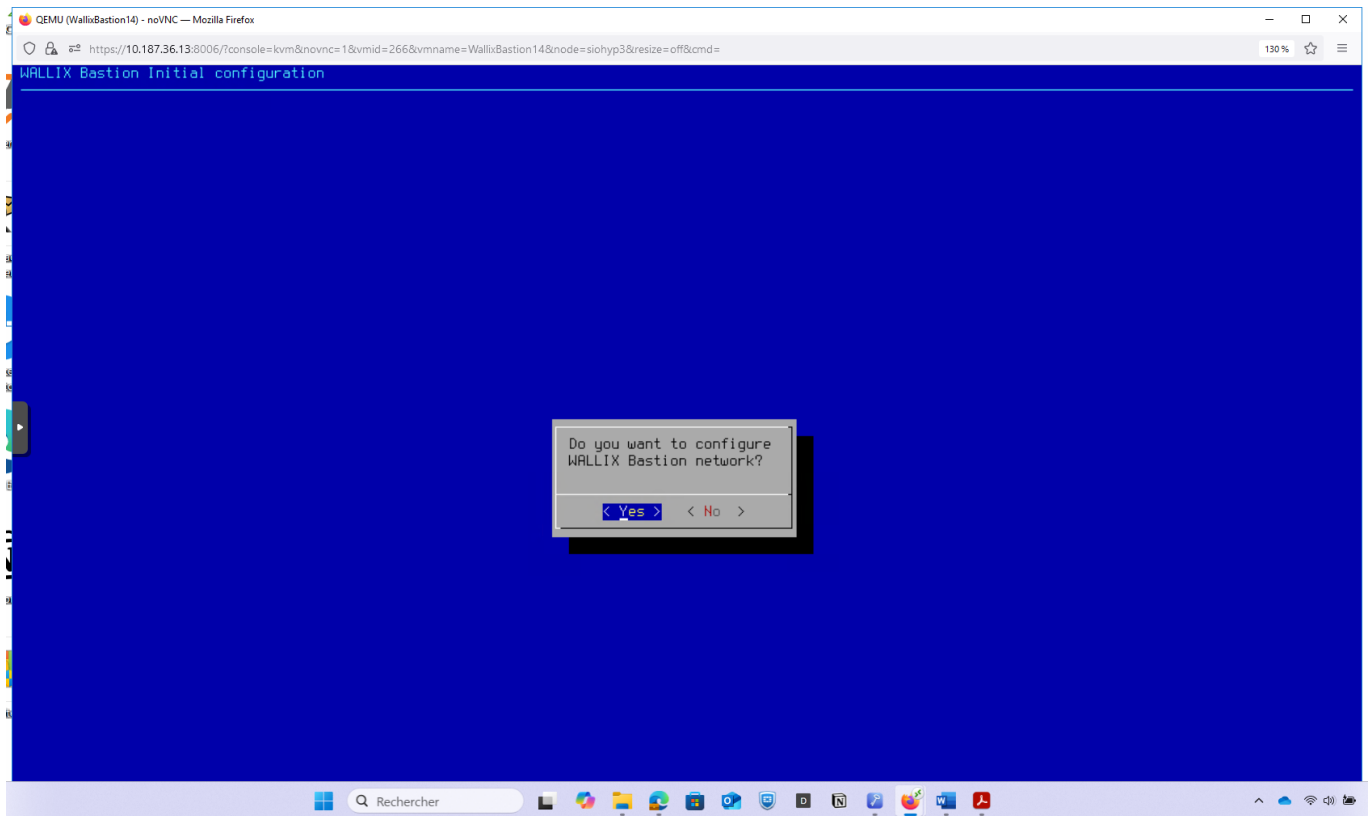
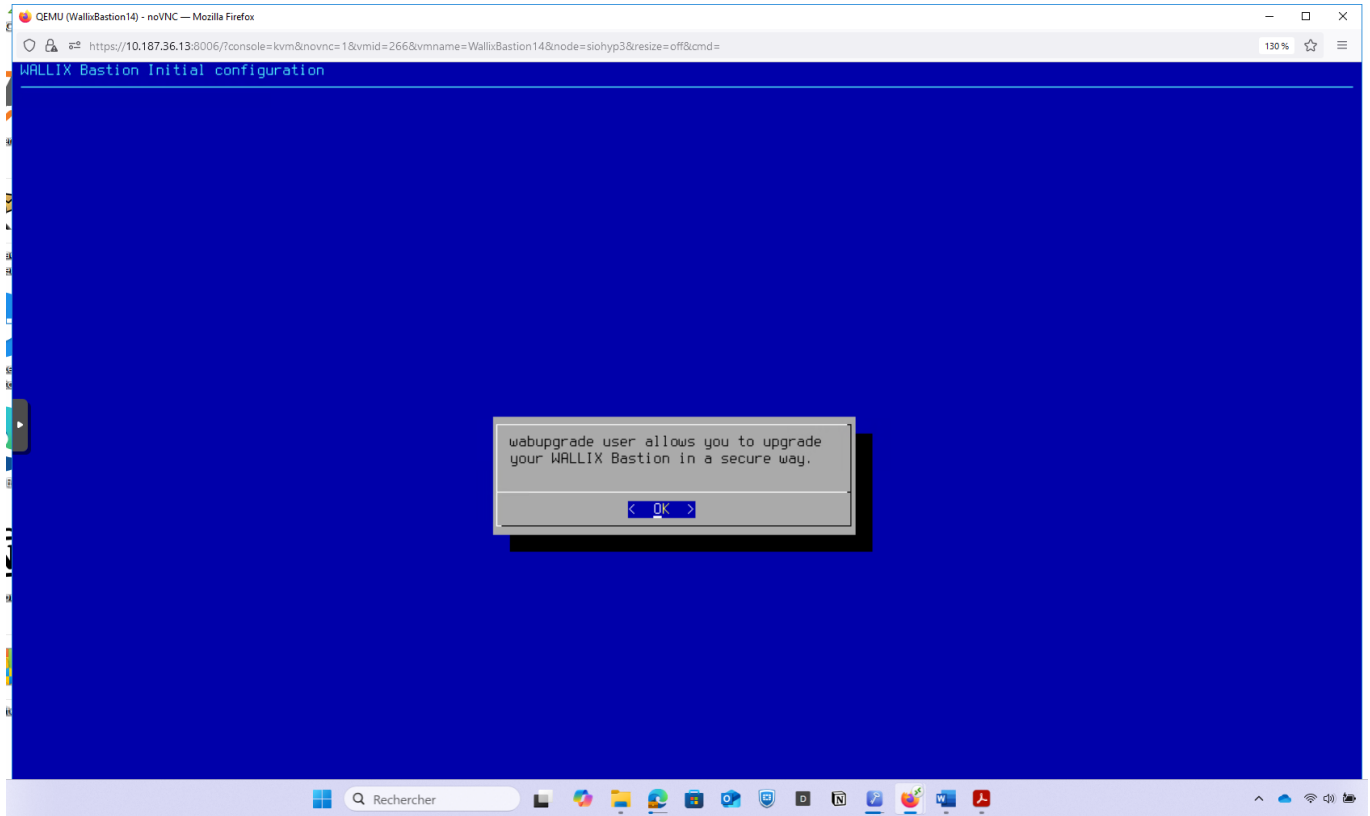


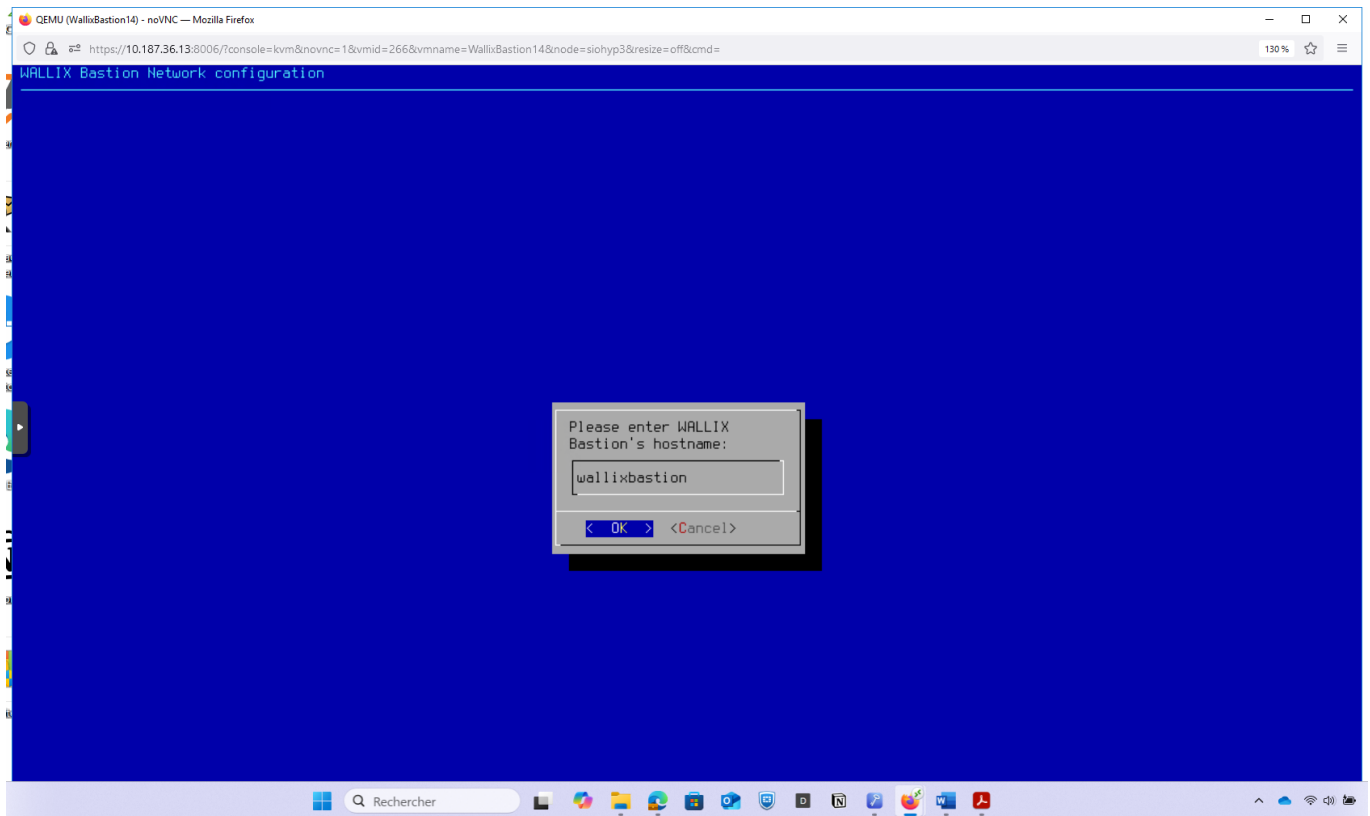
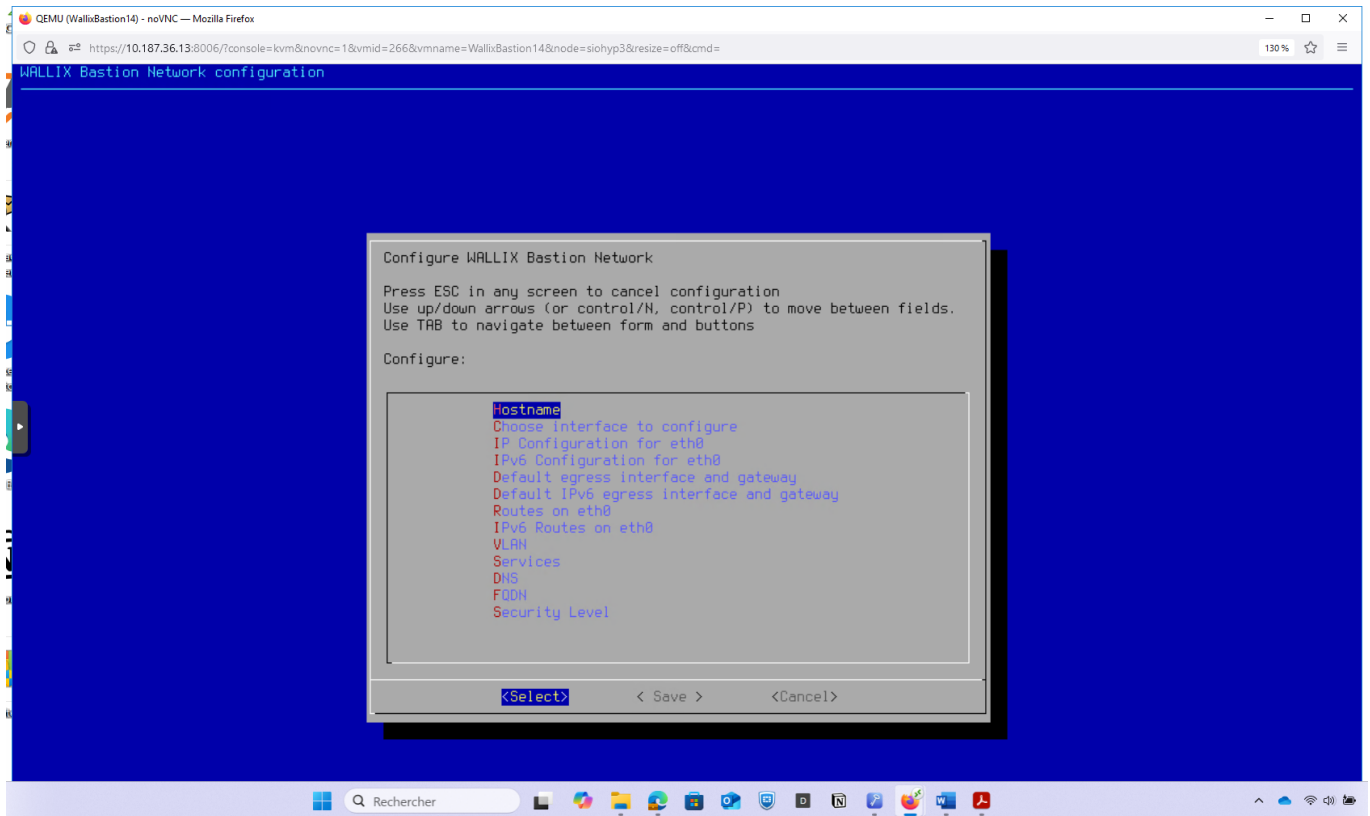
Le mot de passe initial du compte **wabadmin** est **SecureWabAdmin**. Il est nécessaire de le changer par un mot de passe fort.

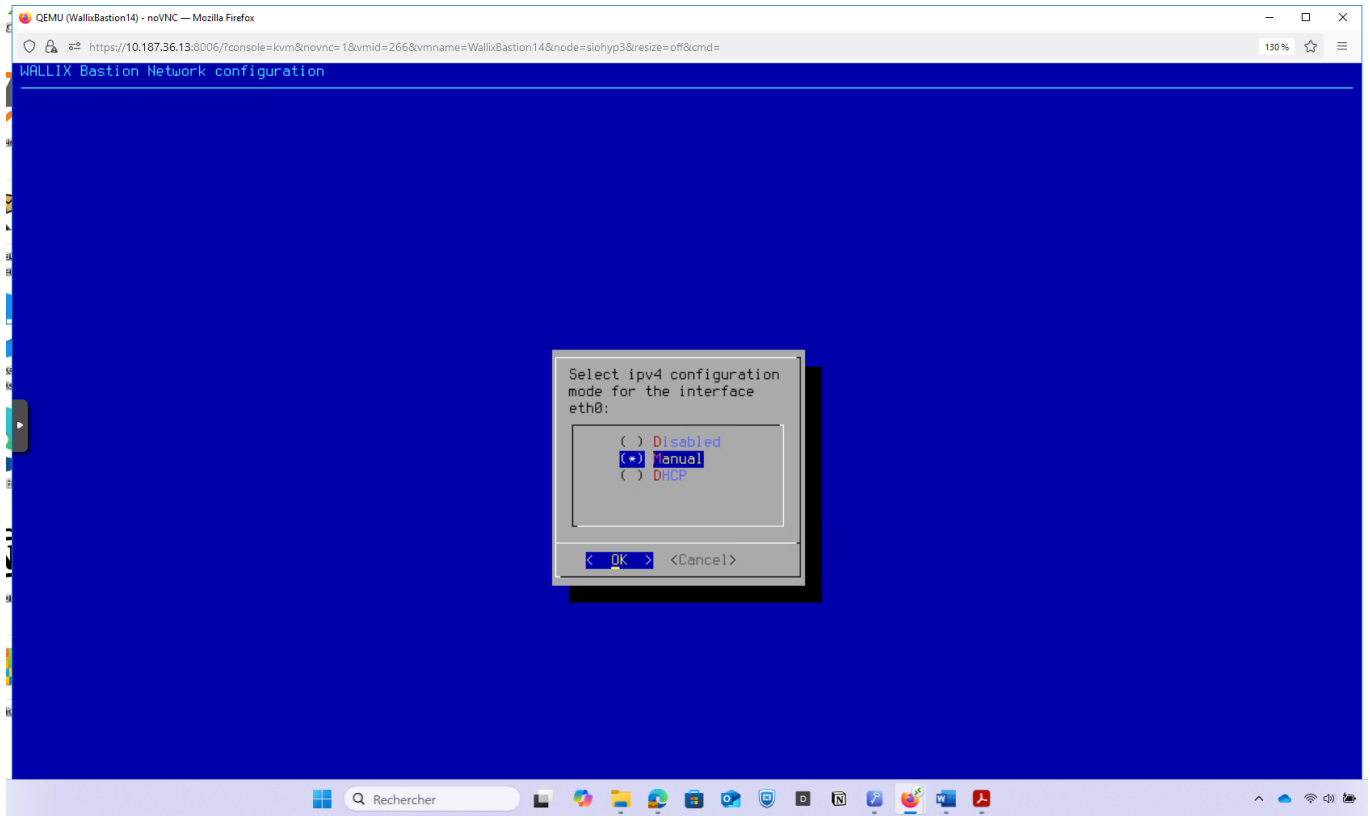
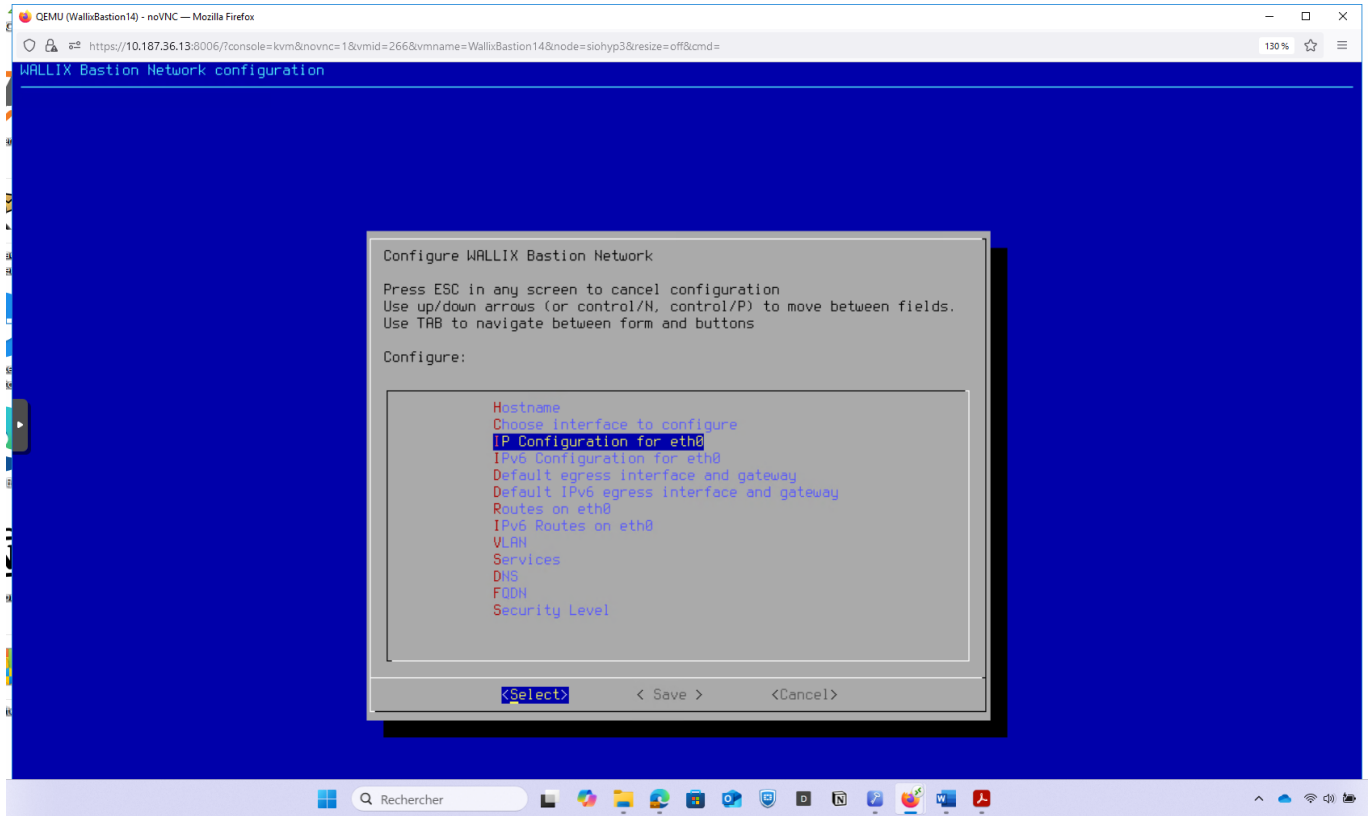


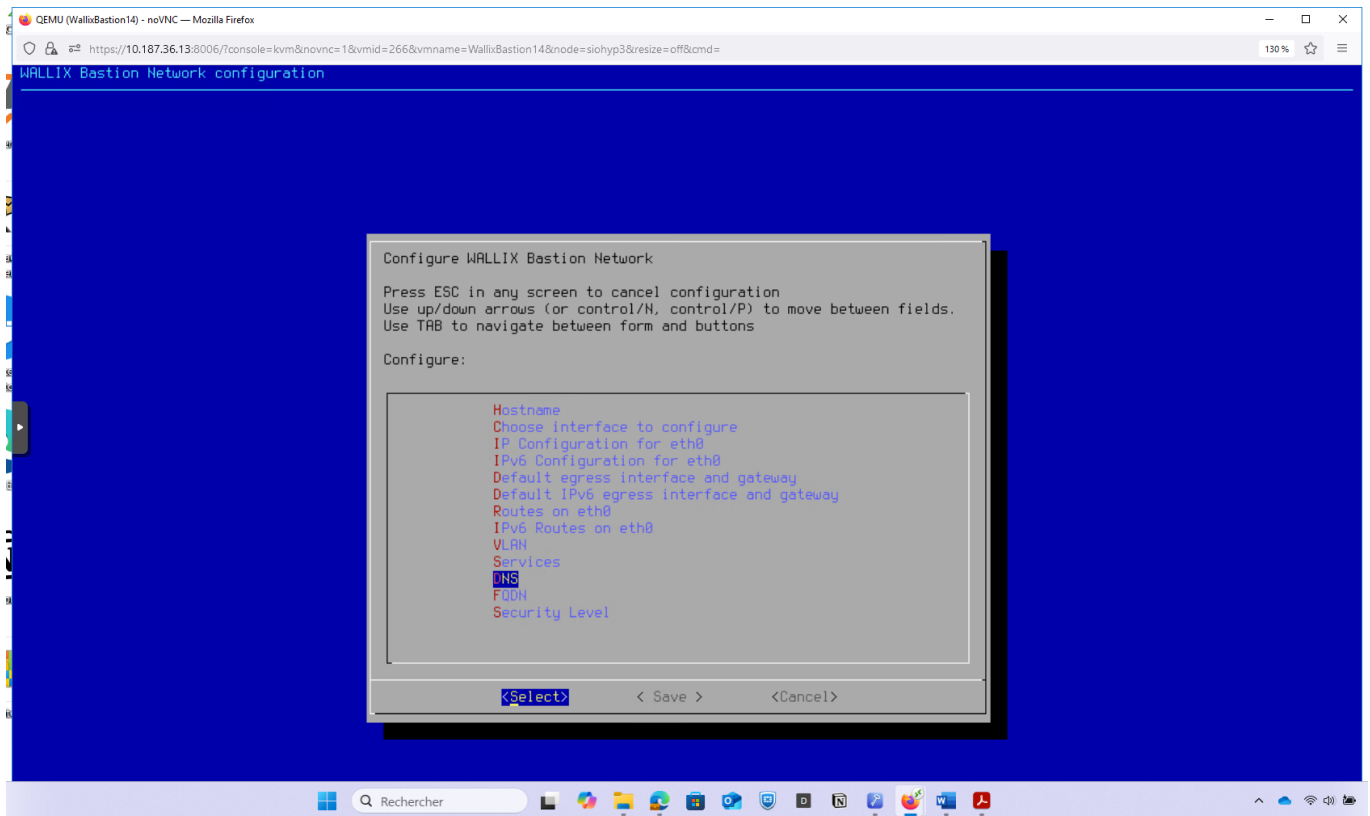
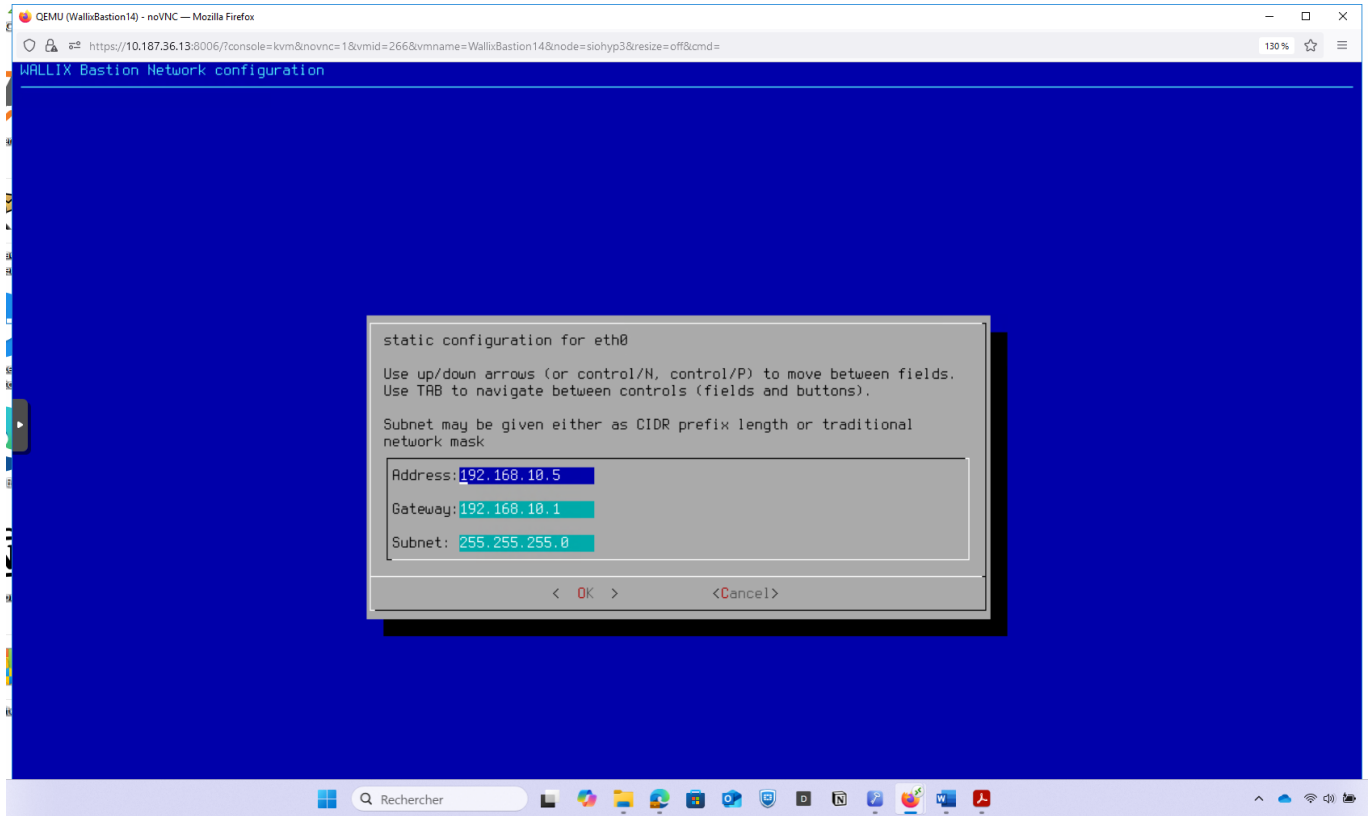


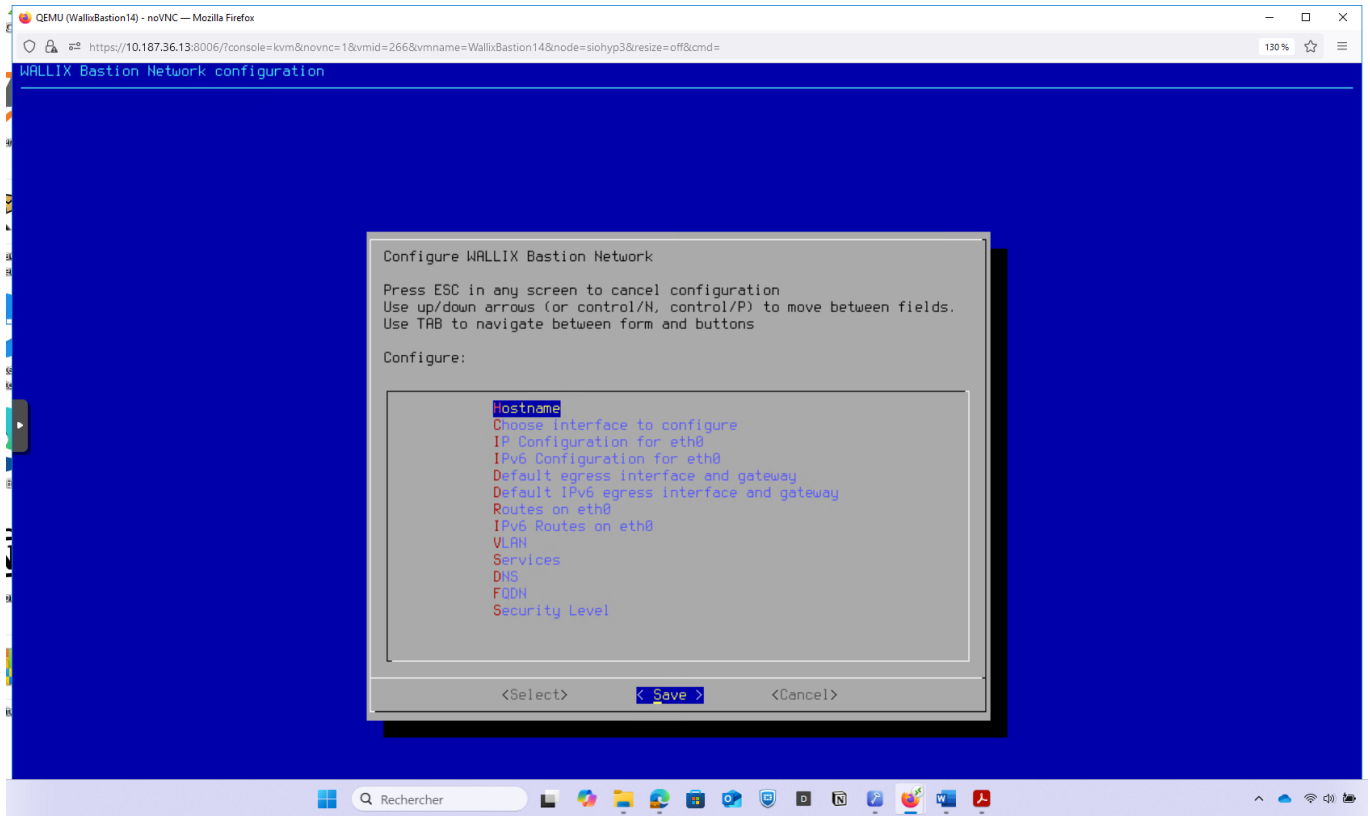
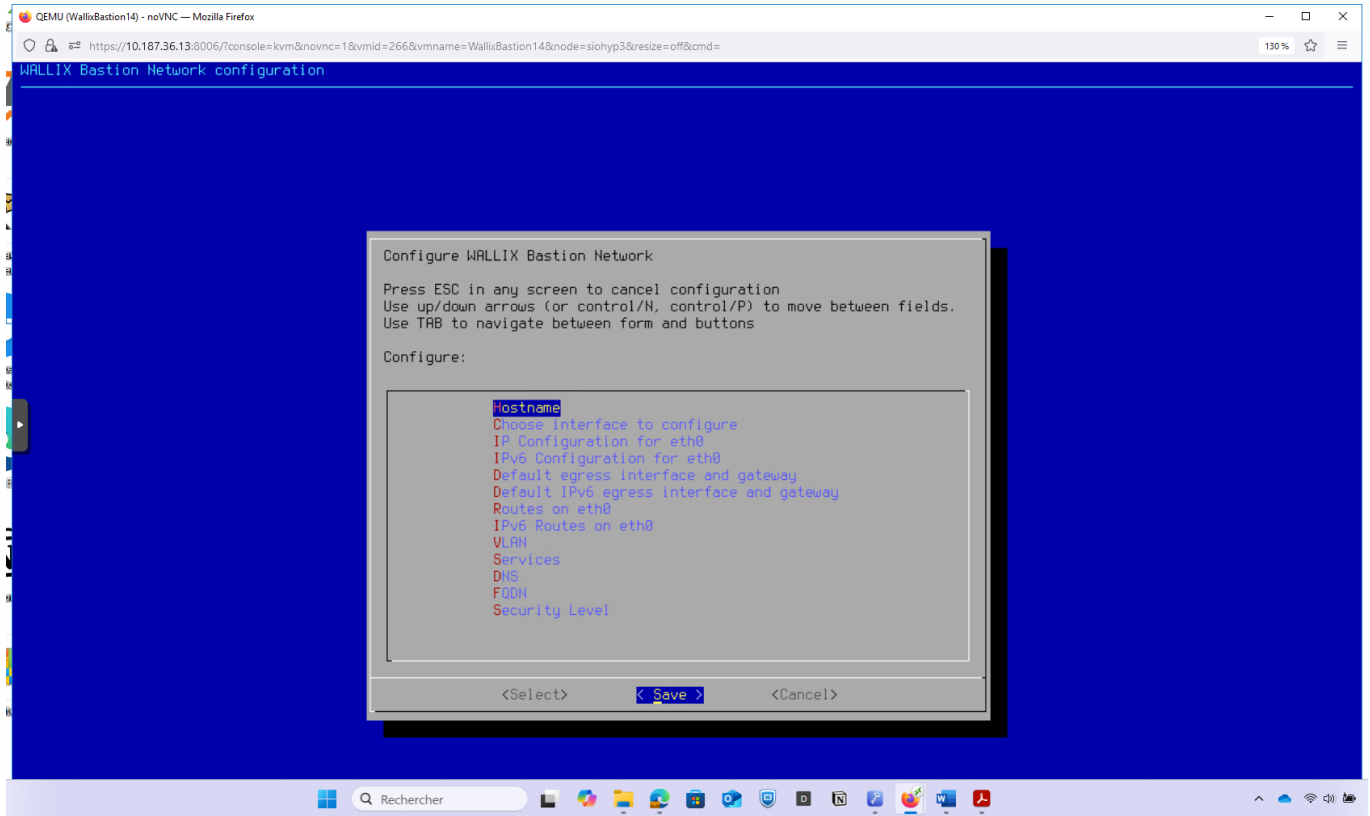


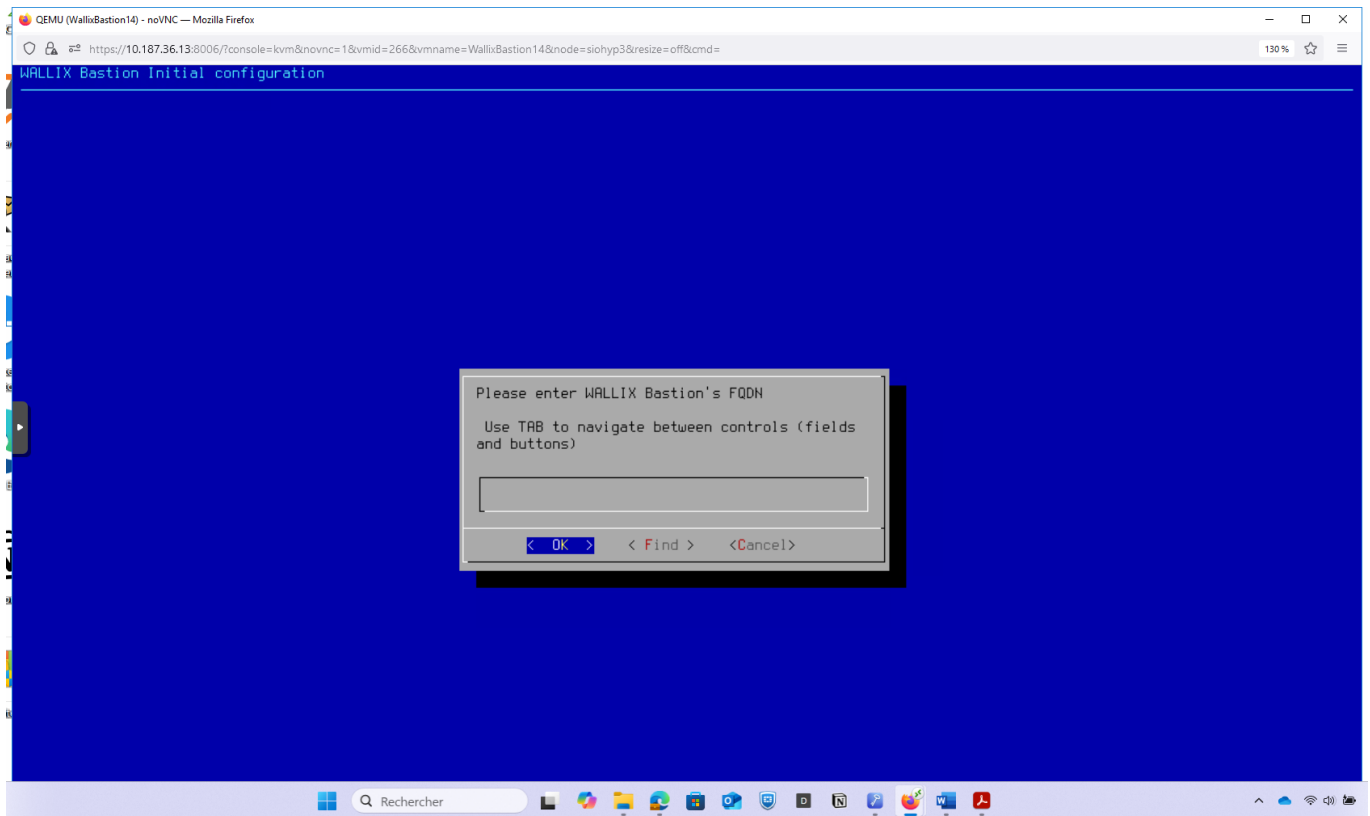
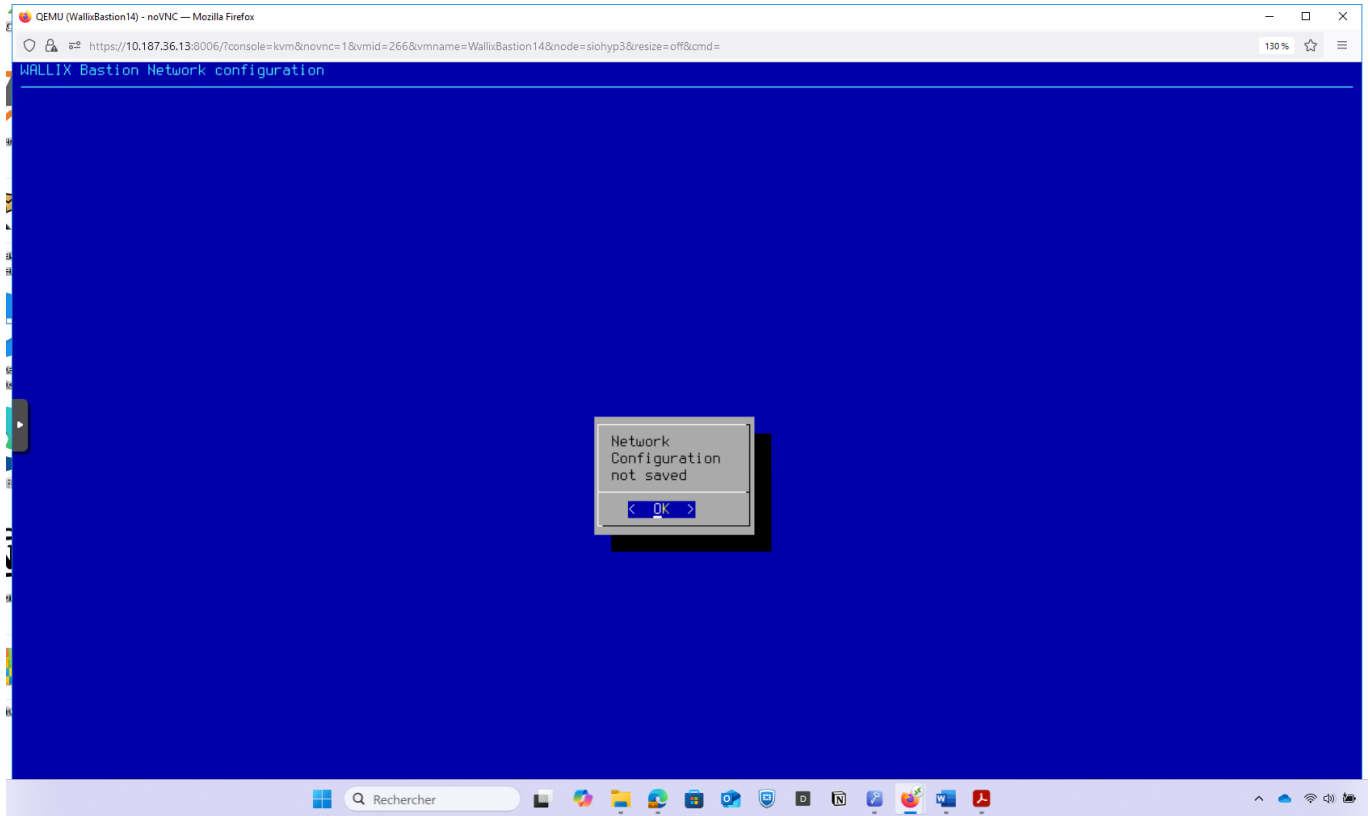


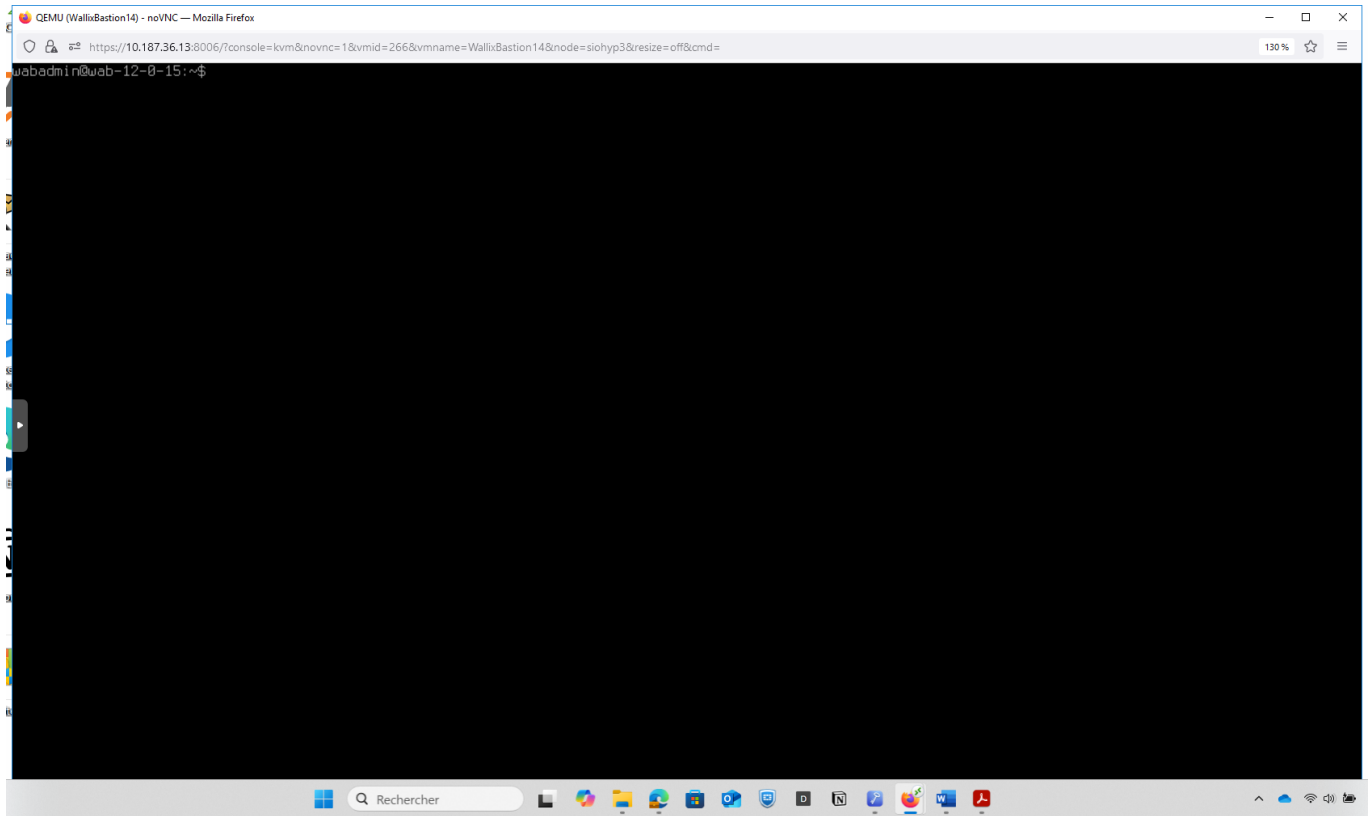
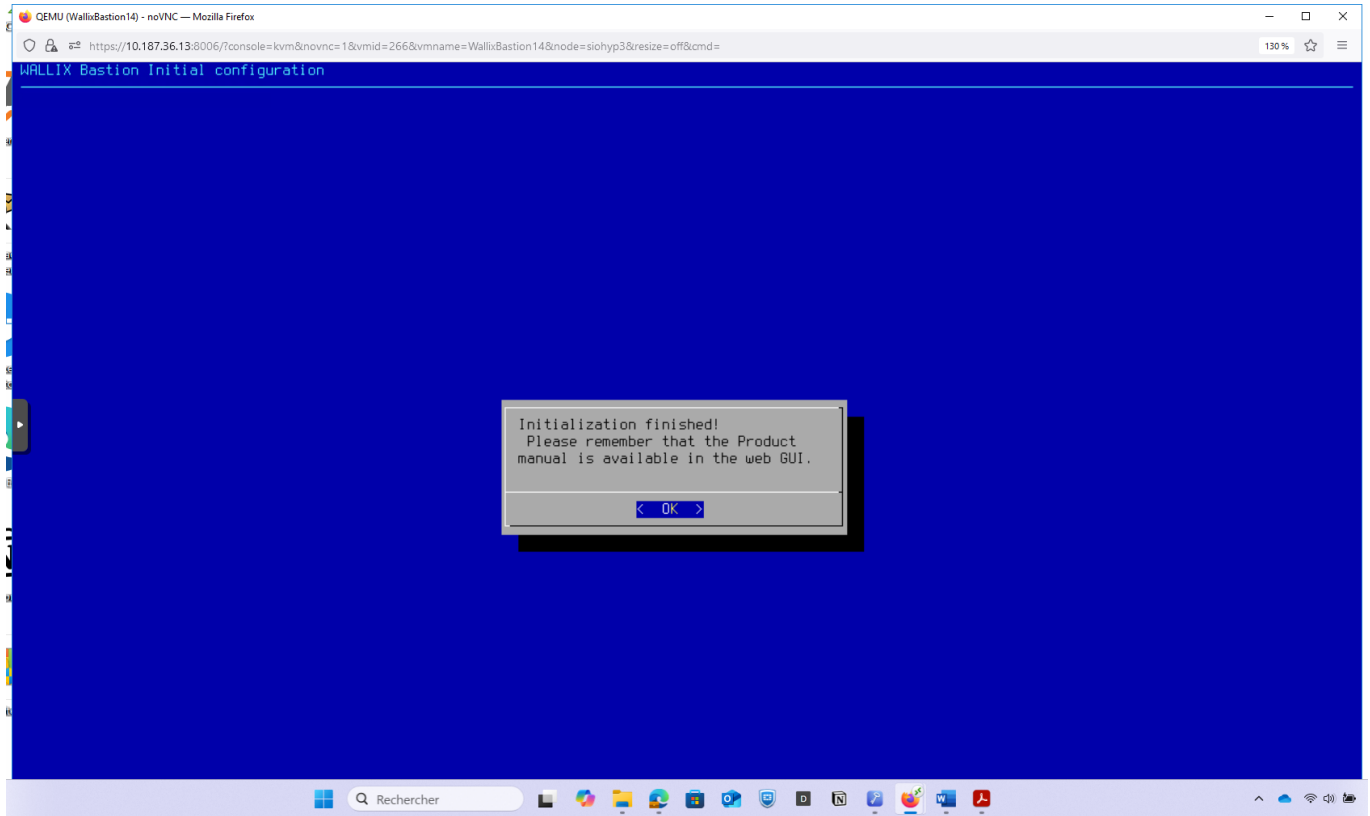












From:
/ - Les cours du BTS SIO

Permanent link:
[/doku.php/reseau/pam/wallix/install?rev=1759064886](https://doku.php/reseau/pam/wallix/install?rev=1759064886)

Last update: 2025/09/28 15:08

